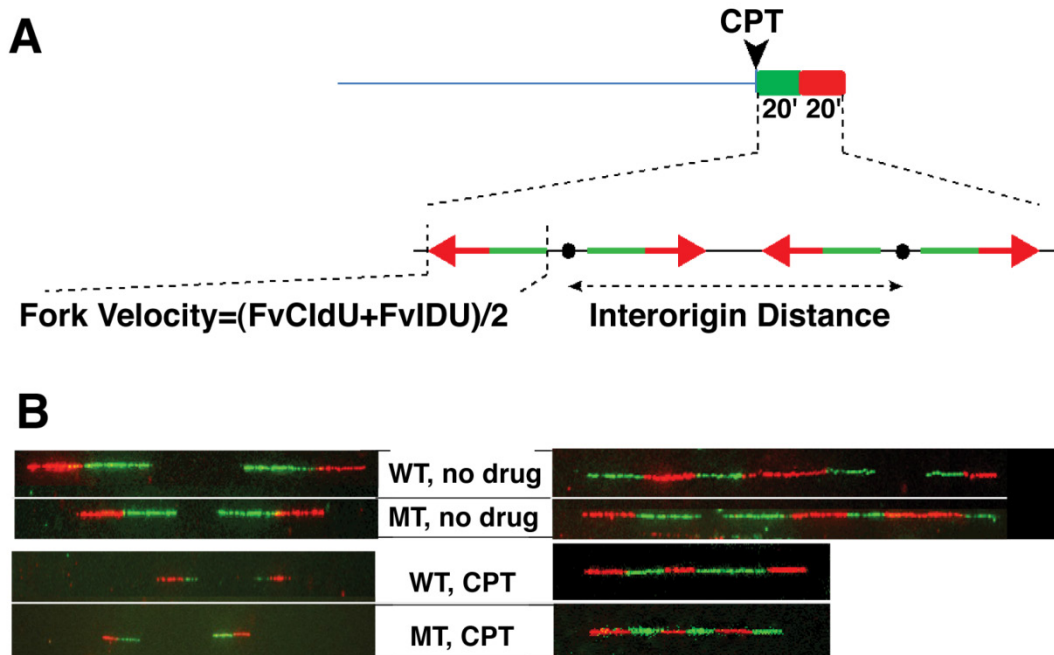


Supplementary Fig. 1. SIRT1 modulates velocity and inter-origin distance of DNA

replication. (A) Experimental protocol for measuring fork velocity and inter-origin distance by the DNA combing assay after CldU and IdU labeling. (B) Representative images of fluorescently labeled DNA fibers from SIRT1-WT and SIRT1-MT MEFs with/without CPT treatment.



Supplementary Fig. 2. MS/MS spectra for acetylated peptides of TOPBP1. Acetylation of (A) Lys1253, (B) Lys1398, (C) Lys1445 and was observed on TopBP1 immunoprecipitated from cells overexpressing SIRT1. Lys1445 acetylation was also observed on protein from cells following over-expression of SIRT1-HY. Acetylation of Lys482 (D) was observed on TopBP1 immunoprecipitated from cells following TSA treatment.

