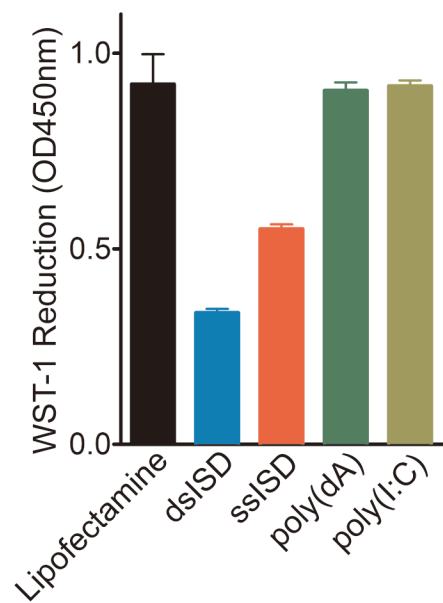
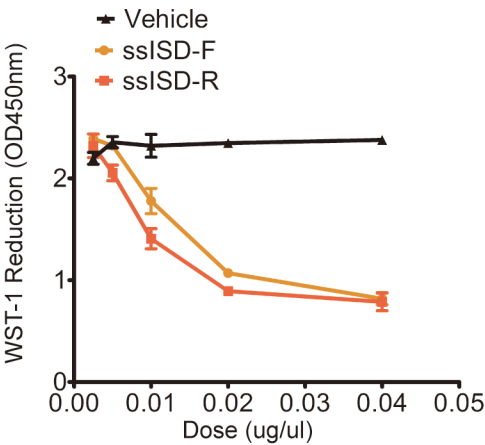


Supplementary Figure 1



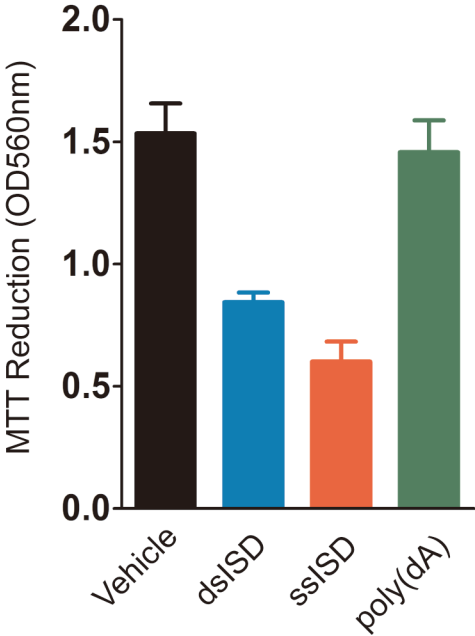
Supplementary Figure 1. dsISD, ssISD, poly(dA) or poly(I:C) was introduced into 293T by Lipofectamine 2000-mediated transfection. WST-1 assay was performed 6 hours after transfection. Data of three independent replicates are presented as the mean \pm s.e.m., $n=3$.

Supplementary Figure 2



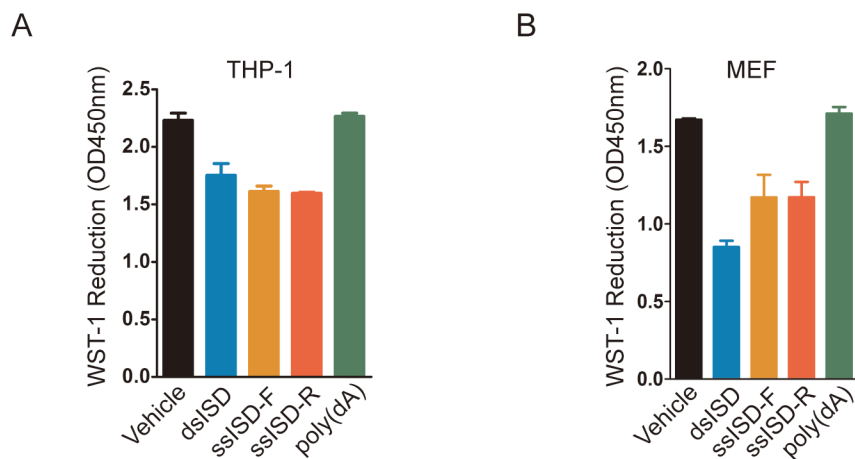
Supplementary Figure 2. 293T cells were transfected with ssISD-F or ssISD-R with indicated doses. WST-1 assay was performed at 6 hours post-transfection. Data of three independent replicates are presented as the mean +/- s.e.m., n=3.

Supplementary Figure 3



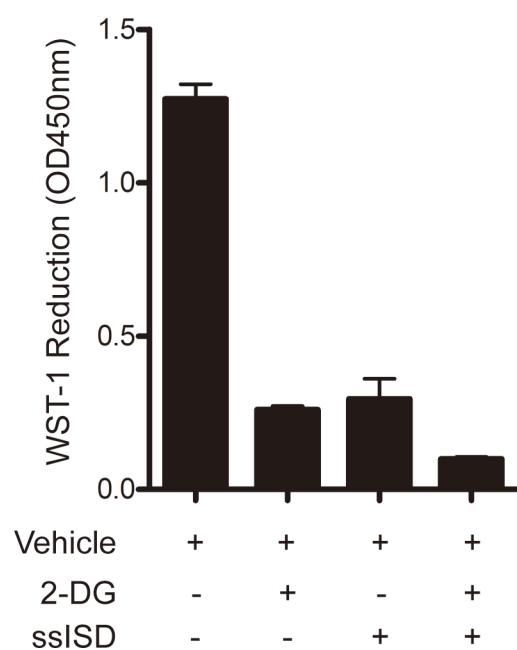
Supplementary Figure 3. dsISD, ssISD, or poly(dA) was introduced into 293T. MTT assay was performed 6 hours after transfection. Data of three independent replicates are presented as the mean +/- s.e.m., n=3.

Supplementary Figure 4



Supplementary Figure 4. THP-1 (A) and MEF (B) cells were transfected as indicated. WST-1 assay was performed at 6 hours post-transfection. F: sense strand. R: anti-sense strand. Data of three independent replicates are presented as the mean \pm s.e.m., $n=3$.

Supplementary Figure 5



Supplementary Figure 5. 293T cells were treated as indicated. WST-1 assay was performed at 6 hours post-transfection or post-treatment with 25mM 2-deoxyglucose. Data of three independent replicates are presented as the mean +/- s.e.m., n=3.