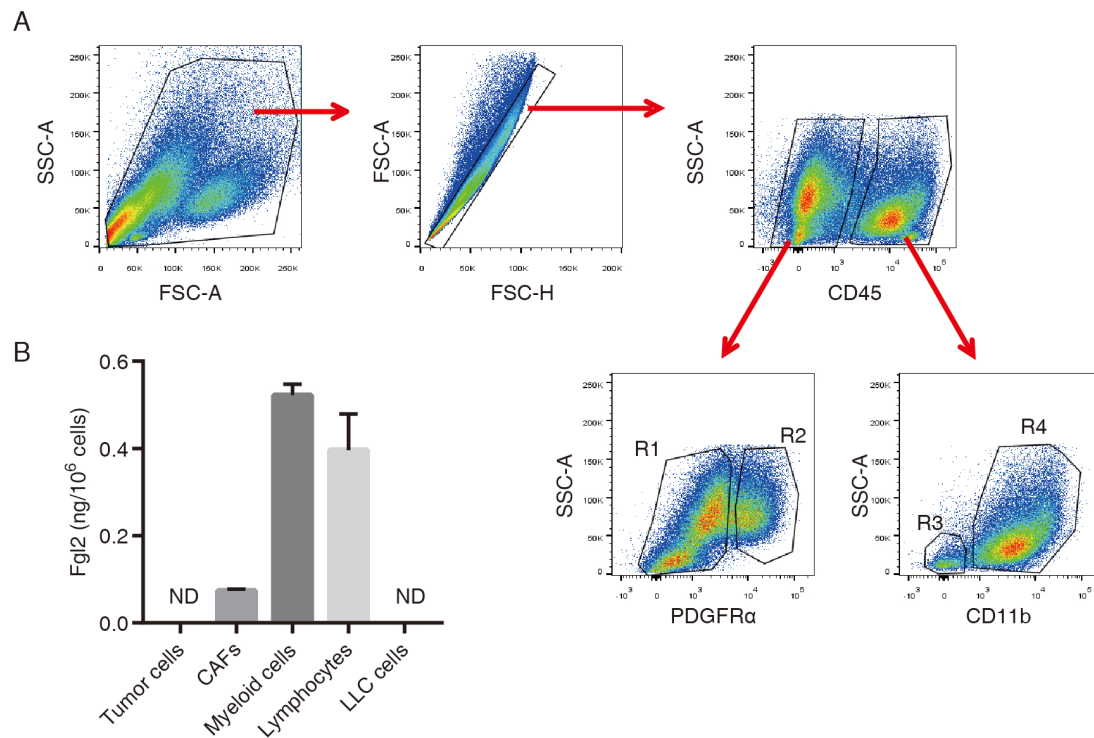


**Supplementary Figure 1. Expression of Fgl2 in various cancer cells.** The levels of Fgl2 mRNA were analyzed in different types of cancer cell lines using the Cancer Cell Line Encyclopedia (CCLE) database (<http://www.broadinstitute.org/ccle/home>).



**Supplementary Figure 2. Myeloid cells and lymphocytes are the main sources of stroma-derived Fgl2 in the TME.** Briefly,  $5 \times 10^5$  LLC cells were subcutaneously injected in C57BL/6 mice. Tumors were harvested on day 15 after LLC cell implantation. Tumor cells ( $CD45^-PDGFR\alpha^-$ , R1), CAFs ( $CD45^-PDGFR\alpha^+$ , R2), lymphocytes ( $CD45^+CD11b^-$ , R3) and myeloid cells ( $CD45^+CD11b^+$ , R4) cells were sorted from LLC tumors by FACS (A). The level of Fgl2 in four kinds of cells in TME and LLC cells cultured *in vitro* was detected by ELISA (B).

**Supplementary Table 1 The primer pairs used in the study.**

Gene	Primer forward	Primer reverse
FAP	5'-gtcacctgatcggaattt-3'	5'-ccccattctgaaggctgtagat-3'
PDGFR $\alpha$	5'-tccatgctagactcagaagta -3'	5'-tcccgggtggacacaattttc -3'
$\alpha$ SMA	5'-gtcccagacatcagggagtaa -3'	5'-tcggatacttcagcgtcagga -3'
Arg1	5'-ctccaagccaaagtcttagag-3'	5'-aggagctgtcattagggacatc-3'
NOS2	5'-gccaccaacaatggcaaca-3'	5'-cgtaccggatgagctgtgaatt-3'
TGF	5'-ctcccgtggcttctagtgc -3'	5'-gccttagttggcaggatctg -3'
CXCL12	5'-tgcacagtgacggtaaacca -3'	5'-ttctcagccgtgcaacaatc -3'
CXCL5	5'-gttccatctcgccattcatgc -3'	5'-gctgctatgactgaggaagg -3'
HGF	5'-atgtggggaccaaacttctg -3'	5'-ggatggcgacatgaagcag -3'
VEGF	5'-gcacatagagagaatgagcttc -3'	5'-ctccgctctgaacaaggct -3'
IL-6	5'-gaggataccactccaacagacc -3'	5'-aagtcatcatcgttggcataca -3'
ACTB	5'-ggctgtattccctccatcg -3'	5'-ccagttgtaacaatgcatgt -3'