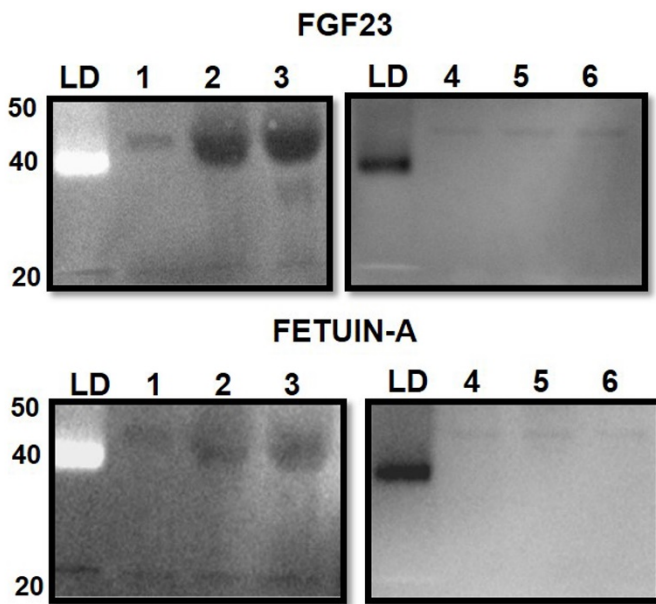


## Supplementary

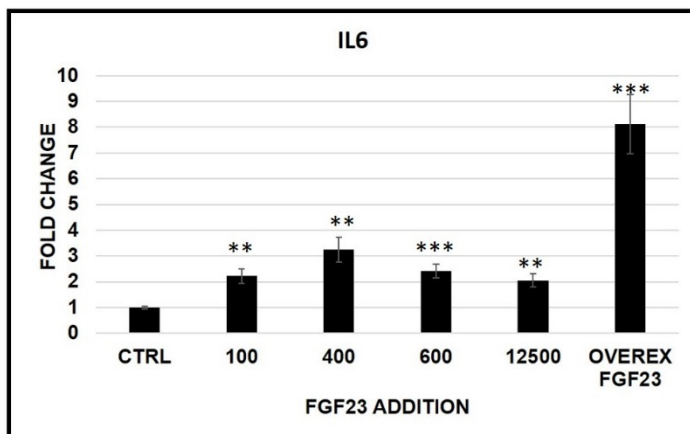
### FGF23 and Fetuin-A Interaction in the Liver and in the Circulation

Deborah Mattinzoli<sup>a</sup>, Masami Ikehata<sup>a</sup>, Koji Tsugawa<sup>a</sup>, Carlo M Alfieri<sup>a,b</sup>, Paola Dongiovanni<sup>c</sup>, Elena Trombetta<sup>d</sup>, Luca Valenti<sup>e,f</sup>, Aldamaria Puliti<sup>g,h</sup>, Lorenza Lazzari<sup>i</sup>, Piergiorgio Messa<sup>a,b,f,&</sup>



**Figure S1:** WB of positive and negative control of HepG2 and plasma at high and low concentration.

1: HEPG2 protein lysate, 2: plasma high FGF23 level, 3: plasma low FGF23 level, 4: HEPG2 IgG, 5: plasma high FGF23 level IgG, 6: plasma low FGF23 level IgG



**Figure S2:** mRNA expression of IL6 in HepG2 after 24h from the addition of scalar FGF23 dose and FGF23 overexpression. Asterisks indicate significant differences versus HepG2(ctrl): \*\*=p<0.01, \*\*\*=p<0.001 by Student's t-test. n=3/group.

**Table S1: antibodies information**

Antibody	Species/Clonality	Source	Catalogue	Dilution	Usages
<b>Primary Ab</b>					
FGF23	Rb polyclonal	Abcam	ab 98000	1:100  5ug/1mg	IF (human materials)  Duolink, CHIP  IP
Alpha-2-HS-glycoprotein [2H2]	Ms monoclonal	Abcam	ab 128120	1:100  1:500	IF, Duolink  WB
FGF23 [M-251]	Rb polyclonal	Santa Cruz	sc-50291	1:100  protein  1:500	IF (mouse materials)  PCR  WB
Human serum albumin [15C7]	Ms monoclonal	Sigma	ab 10241	1:100	IF (human cells)
Cofilin	Rb polyclonal	Sigma	C8736	1:16000	WB
Clathrin	Goat polyclonal	Abcam	Ab 6316	1:100	IF
DAPI		Sigma	D9542	1:1000	IF
RNA polymerase II		Thermo Scientific	1862243	10ul	CHIP

Normal rabbit IgG		Thermo Scientific	1862244	1ul	CHIP, IP
<b>Secondary Ab</b>					
Alexa Fluor 546	Goat anti-Rb IgG	Invitrogen	A 11035	1:70	
Alexa Fluor 488	Goat anti-Ms IgG	Invitrogen	A 11029	1:70	
Alexa Fluor 546	Goat anti-Ms IgG	Invitrogen	A11030	1:70	
Alexa Fluor 647	Goat anti-Rb IgG	Invitrogen	A27040	1:70	
<b>Negative ctrl</b>					
IgG Isotype ctrl	Rb	Invitrogen	PA5-23090	1:100	
IgG1Isotype ctrl	Ms	Invitrogen	MA5-14453	1:100	

**Table S2: primers information**

GENE	NCBI	FORWARD PRIMERS	REVERSE PRIMERS
		5' → 3'	5' → 3'
Hu FGF23	NM_020638. 2	CCT TGT GCC TCT CCT CTT TAT C	GAT TTC CTC TTC CCT ACA CCT TC
Hu AHSG	NM_001622. 2	GCA GCT CTG GTG GCT ATA GA	CTT CGA CAG CAT GCT CCT TC
Hu TNF $\alpha$	NM_000594. 3	AGG ACC AGC TAA GAG GGA GA	CCC GGA TCA TGC TTT CAG TG
Hu IL6	NM000600.4	AGT CCT GAT CCA GTT CCT GC	CTA CAT TTG CCG AAG AGC CC
Ms FGF23	NM_022657. 4	GAT CCC CAC CTC AGT TCT CA	CCG GAT AGG CTC TAG CAG TG

Hu RPL4	NM_000968. 3	CGA GCA CCA CGC AAG AAG ATC CA	AAT GGT GTT CCG GCG CATG GT
Ms RPL13	NM016738.5	GAT GGT GCG AGC CAC TTT CTT G	GTG AGG TGC CCT ACA GTG AGA TAC
Hu AHSB promoter	NM_001622	CAG CGA TGT CCT AAC CTG TTT	GAG GGT GGT GGG CTT TAT TT
GAPDH promoter	1862245	Thermo Scientific	