

Supplementary tables

Table S1 The sequences of shER α -36 and scrambled shRNA

Name	Targeting sequence
Scramble:	TTCTCCGAACGTGTCACGT
shER α -36-1:	GCAATTATTCCTTTGCCTTGC
shER α -36-2:	GCGTTGCATCATAACATAAGC

Table S2 Sequences of primers used in this study

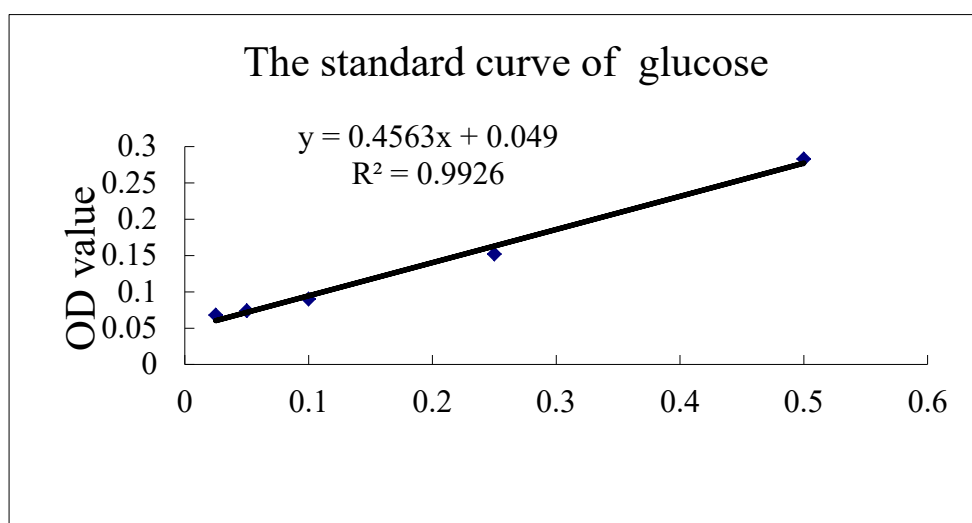
ER α -36:	Forward: 5'-CAAGTGGTTTCCTCGTGTCTAAAG-3'
	Reverse: 5'-TGTTGAGTGTTGGTTGCCAGG-3'
Nanog:	Forward: 5'-ATTCAGGACAGCCCTGATTCTTC-3'
	Reverse: 5'-TTTTTGCGACACTCTTCTCTGC-3'
Oct4:	Forward: 5'-GGACCGTTGGTTGTGAGTTGT-3'
	Reverse: 5'-TGCTCCAGCTTCTCCTTCTC-3'
Bmi1:	Forward: 5'-GCTGCCAATGGCTCTAATGAA-3'
	Reverse: 5'-TGCTGGGCATCGTAAGTATCTT-3'

β -actin: Forward: 5'-TTGCGTTACACCCTTTCTTG-3'

Reverse: 5'-TTTGACCTTGCCACTTCCAC-3'

Supplementary Figures

A



B

Concentration	(mg/mL)	Absorbance
---------------	---------	------------

HP sample	0.1	0.093
-----------	-----	-------

Purity of HP	99.02%
--------------	--------

Figure S1. Determination of polysaccharide purity

A. The standard curve of glucose. B. The percentage of polysaccharides.

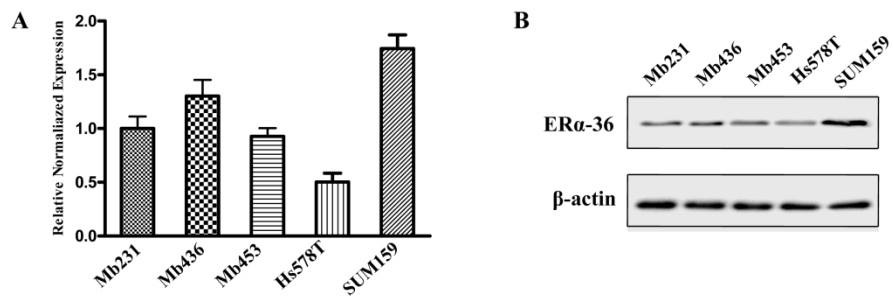


Figure S2. The expression of ERα-36 in TNBC cells.

A. ER α -36 expression at mRNA level in Mb231, Mb436, Mb453, Hs578T and SUM159 cells measured by qRT-PCR. B. ER α -36 expression at protein level in Mb231, Mb436, Mb453, Hs578T and SUM159 cells measured by western blot.

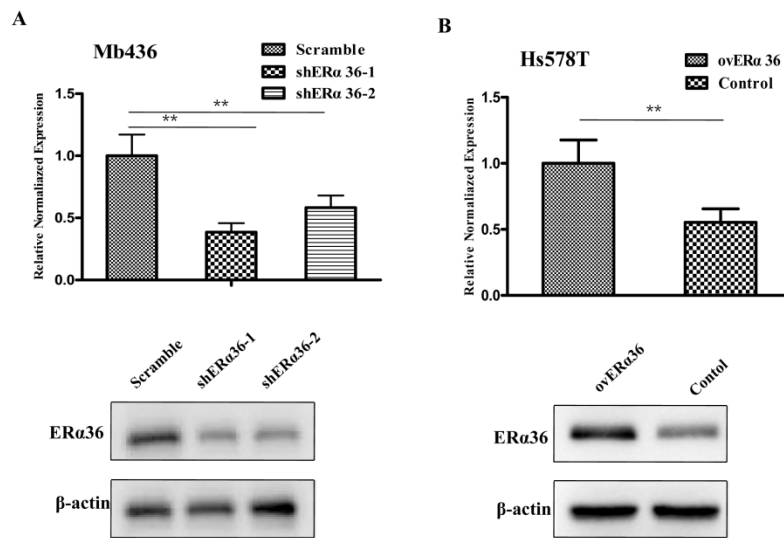


Figure S3. The efficacy of ER α -36 knockdown and overexpression

A. qRT-PCR and western blot assays showed the efficacy of ER α -36 knockdown in Mb436 cells.

B. qRT-PCR and western blot assays showed the efficacy of ER α -36 overexpression in Hs578T cells.