

Figure S1.

Analysis of peripheral blood cell RBC and Hb counts at 0, 4, 6, 8, 10 and 12 weeks after plpC injection are shown. * $p < 0.05$, *** $p < 0.001$. p values were determined by two-way ANOVA.

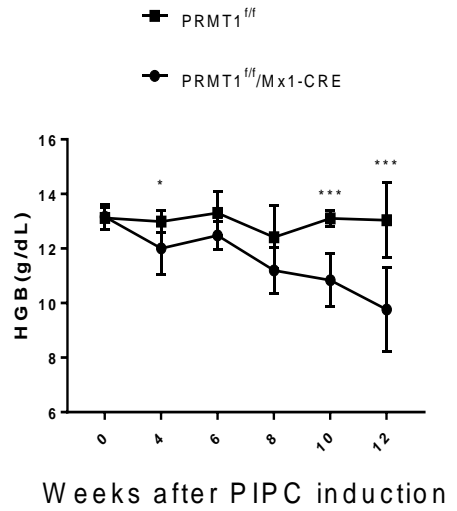
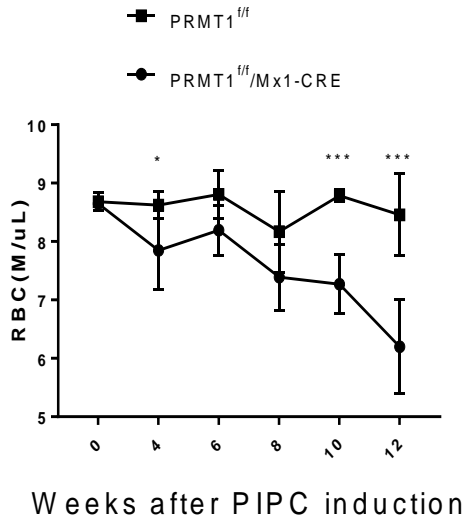
Figure S2.

Kaplan-Meier survival curve of PRMT1^{ff} ($n=6$), and PRMT1^{ff}/Mx1-CRE mice ($n=8$).

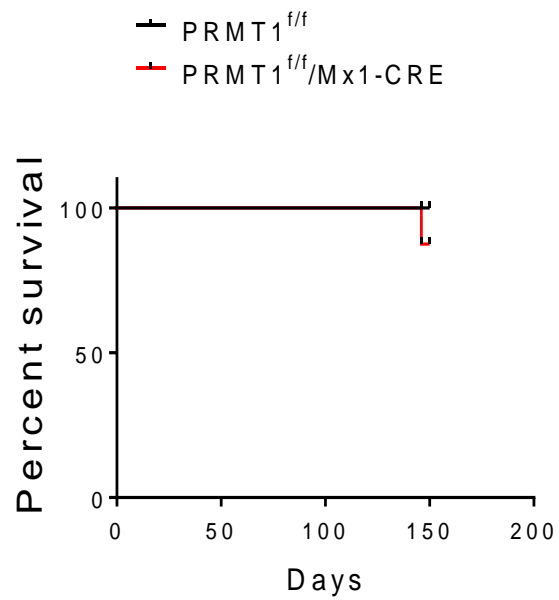
Figure S3.

Analysis of peripheral blood cell WBC counts at 4 weeks after plpC injection are shown ($n=5$).

Supplementary figure S1



Supplementary figure S2



Supplementary figure S3

