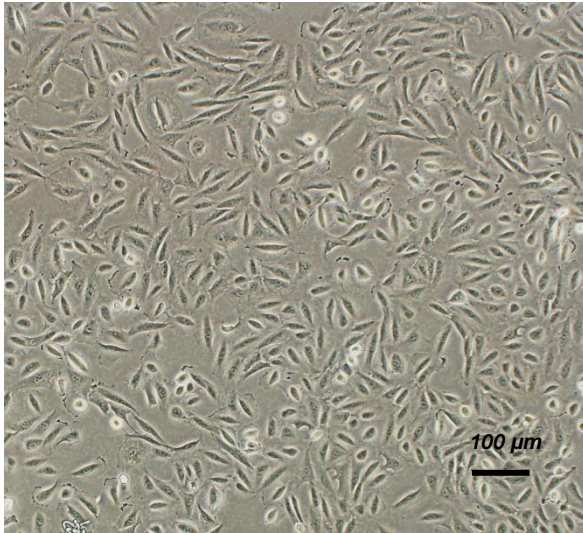
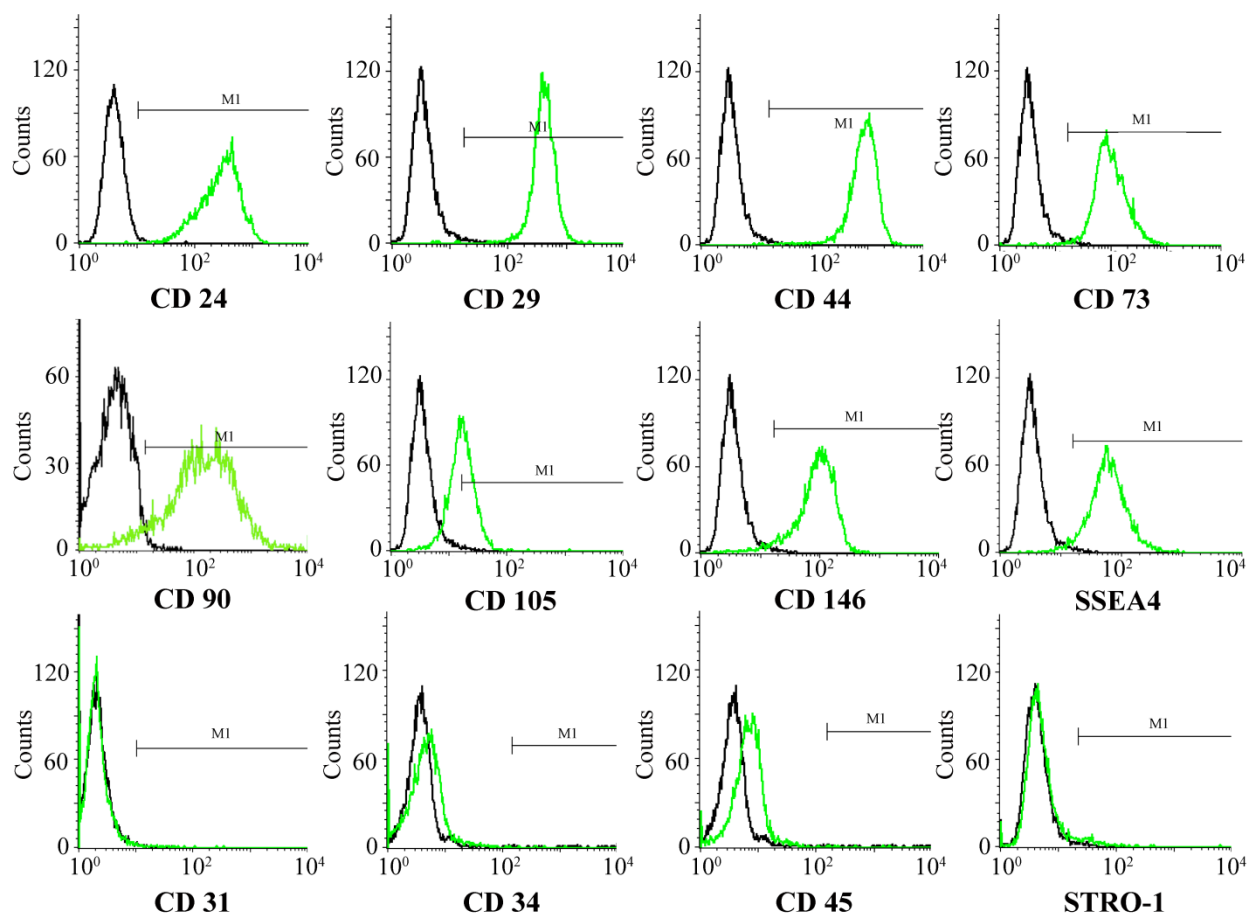


A





B

Supplement Figure 1. (A) Human USC all displayed "rice grain"-like morphology in the early passage (p2). **(B)** USC expressed markers of glomerular parietal epithelial cells (CD24, CD29 and CD44), and also classical cell surface markers of MSC (CD73, CD90, CD105, CD146 and SSEA-4) and negative expression of hematopoietic markers (CD 31, CD34 and CD45).