

Supplementary Materials

Figure S1

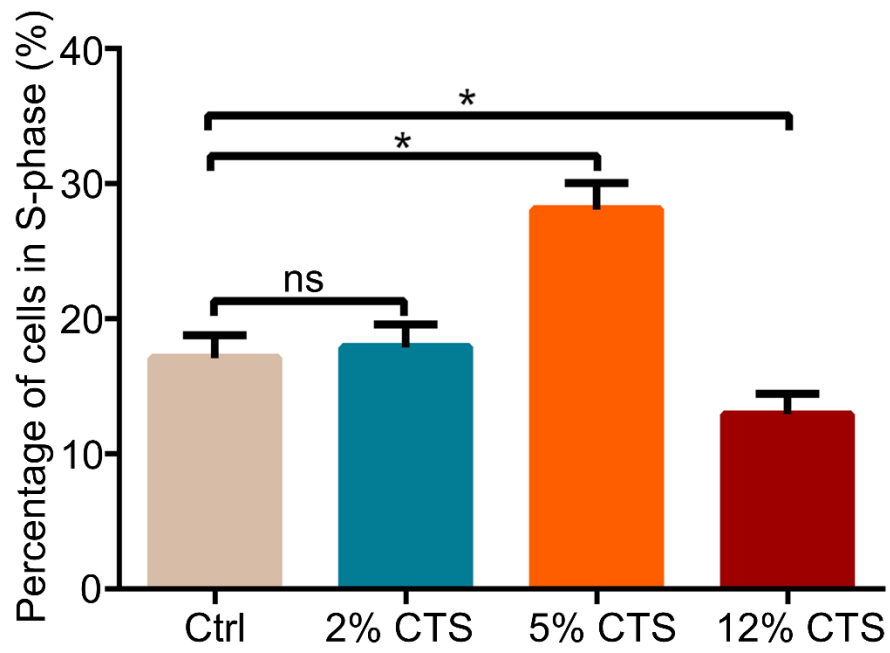


Figure S1. Percentage of S phase in cells under different mechanical conditions.

(* $p < 0.05$, ^{ns} $p > 0.05$ vs. Ctrl). The error bars indicate SD. N = 3.

Figure S2

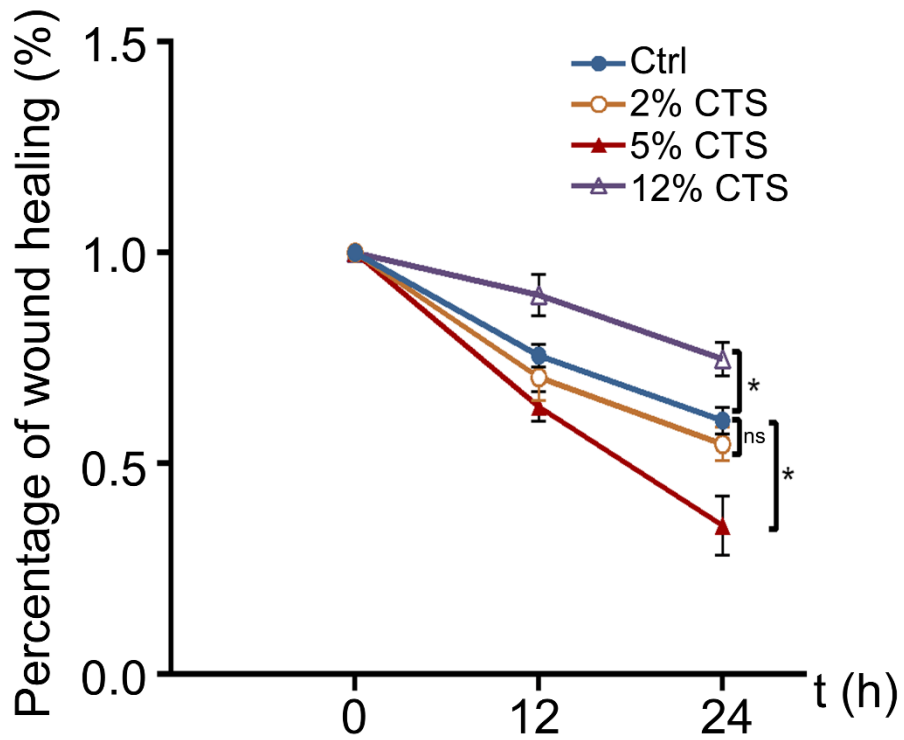


Figure S2. Wound closure expressed as the remaining area uncovered by the cells. The scratch area at time point 0 hours was set to 1. ($*p < 0.05$, $^{ns}p > 0.05$ vs. Ctrl). The error bars indicate SD. N = 3.

Figure S3

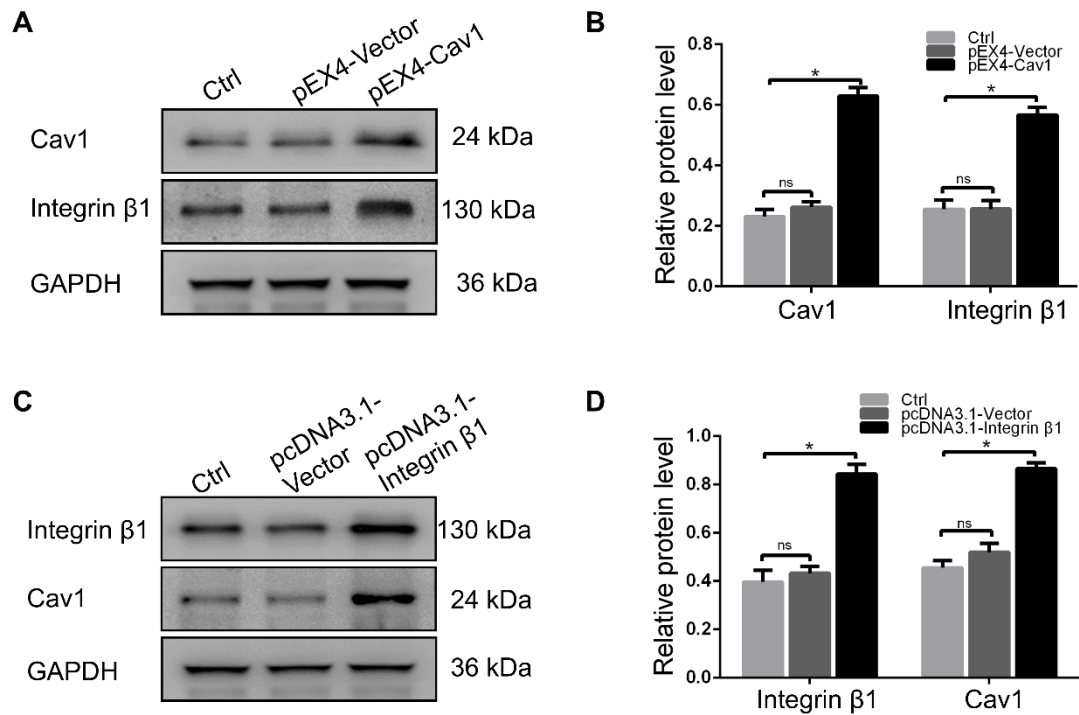


Figure S3. The interaction between Cav1 and integrin β 1. (**A, B**) Western blot analysis of integrin β 1 in AFCs after overexpression of Cav1. (**C, D**) Western blot analysis of Cav1 in AFCs after overexpression of integrin β 1. (* $p < 0.05$, ^{ns} $p > 0.05$ vs. Ctrl). The error bars indicate SD. N = 3.

Figure S4

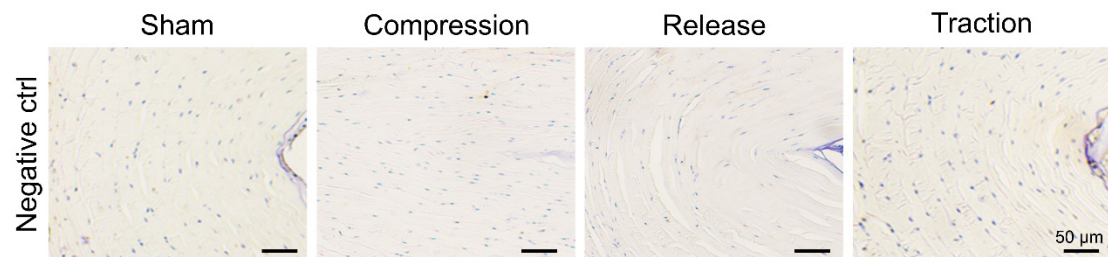


Figure S4. Negative control of immunohistochemistry for each group. N = 3. Scale bar = 50 μ m.