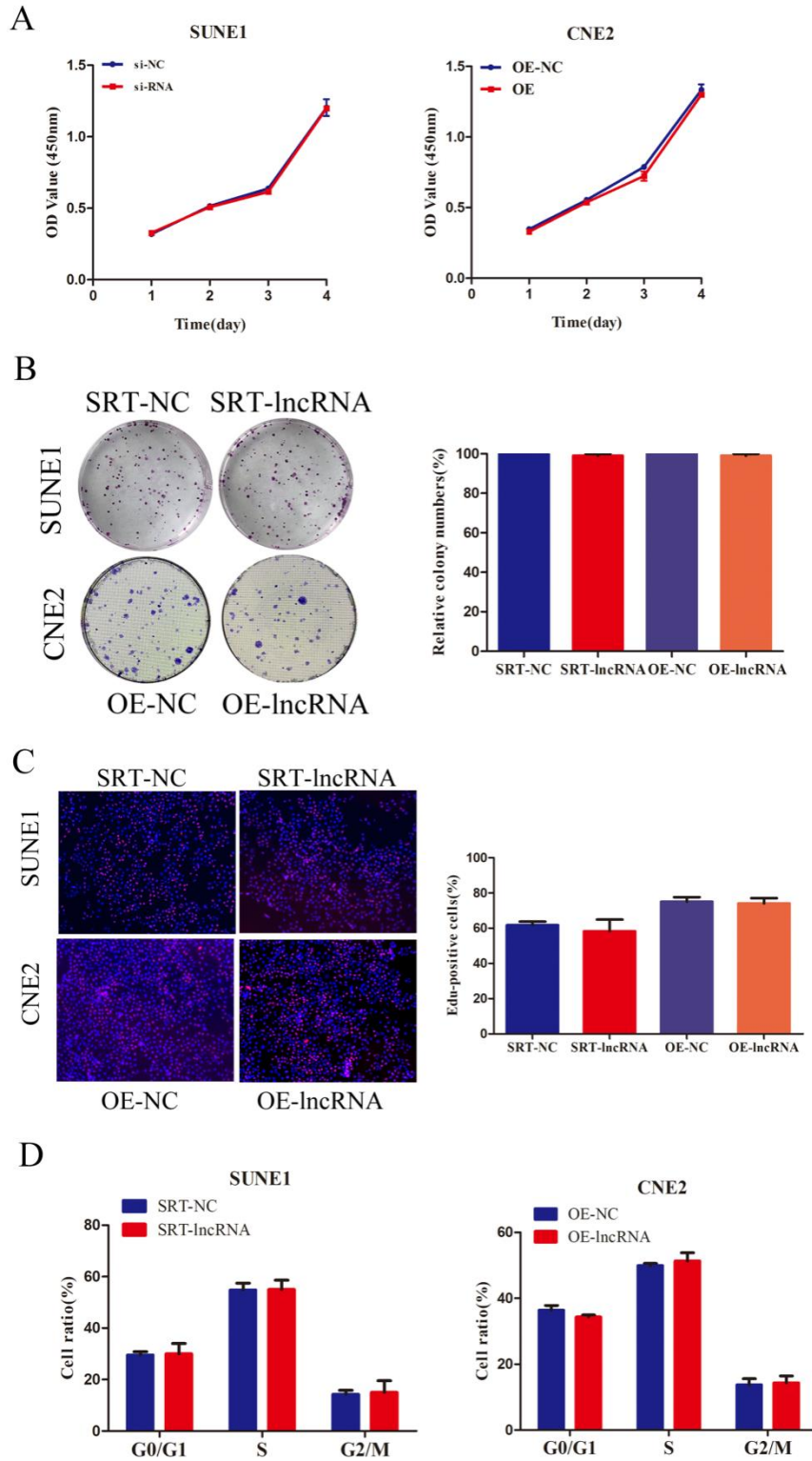


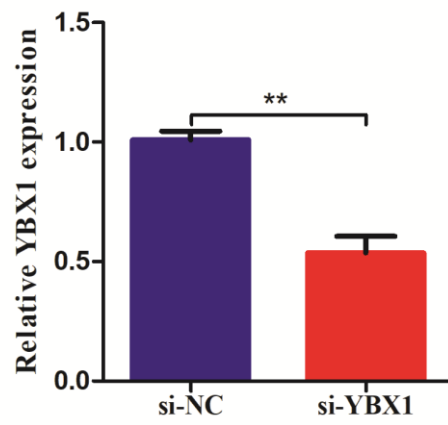
### Supplementary Figure 1

Western blot assays indicated that EPB41L4A-AS2 knockdown showed no obvious effects on the expressions of SMAD and p-SMAD2.



## Supplementary Figure 2

(A-C) CCK8, colony formation, and EDU assays were used to explore the cell viability of NPC cells under different treatments. (D) The cell cycle was detected by flow cytometry.



### Supplementary Figure 3

The results indicated that siRNA against YBX1 effectively reduced YBX1 expressions.

\* $P < 0.05$  and \*\* $P < 0.01$ .