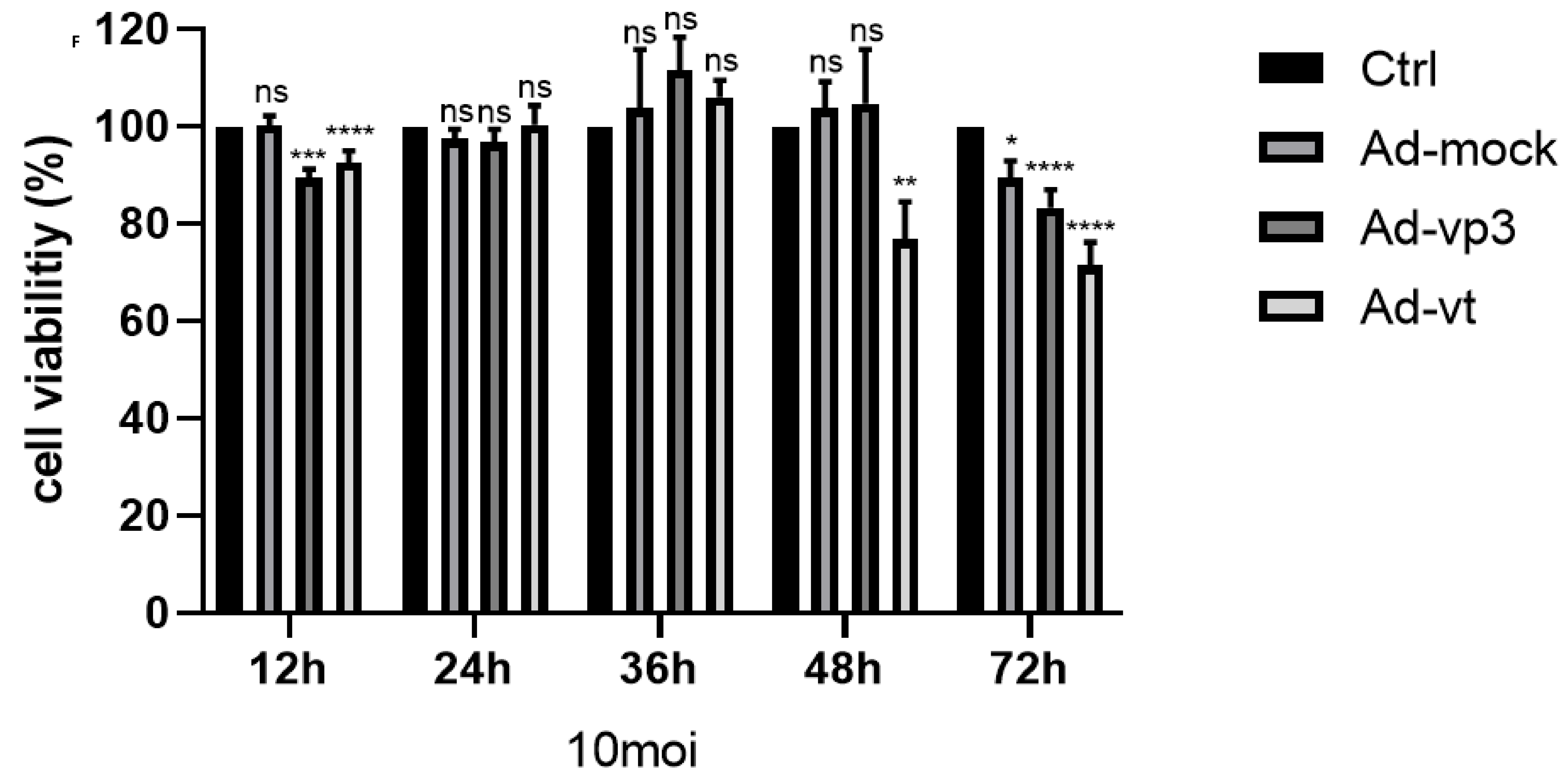
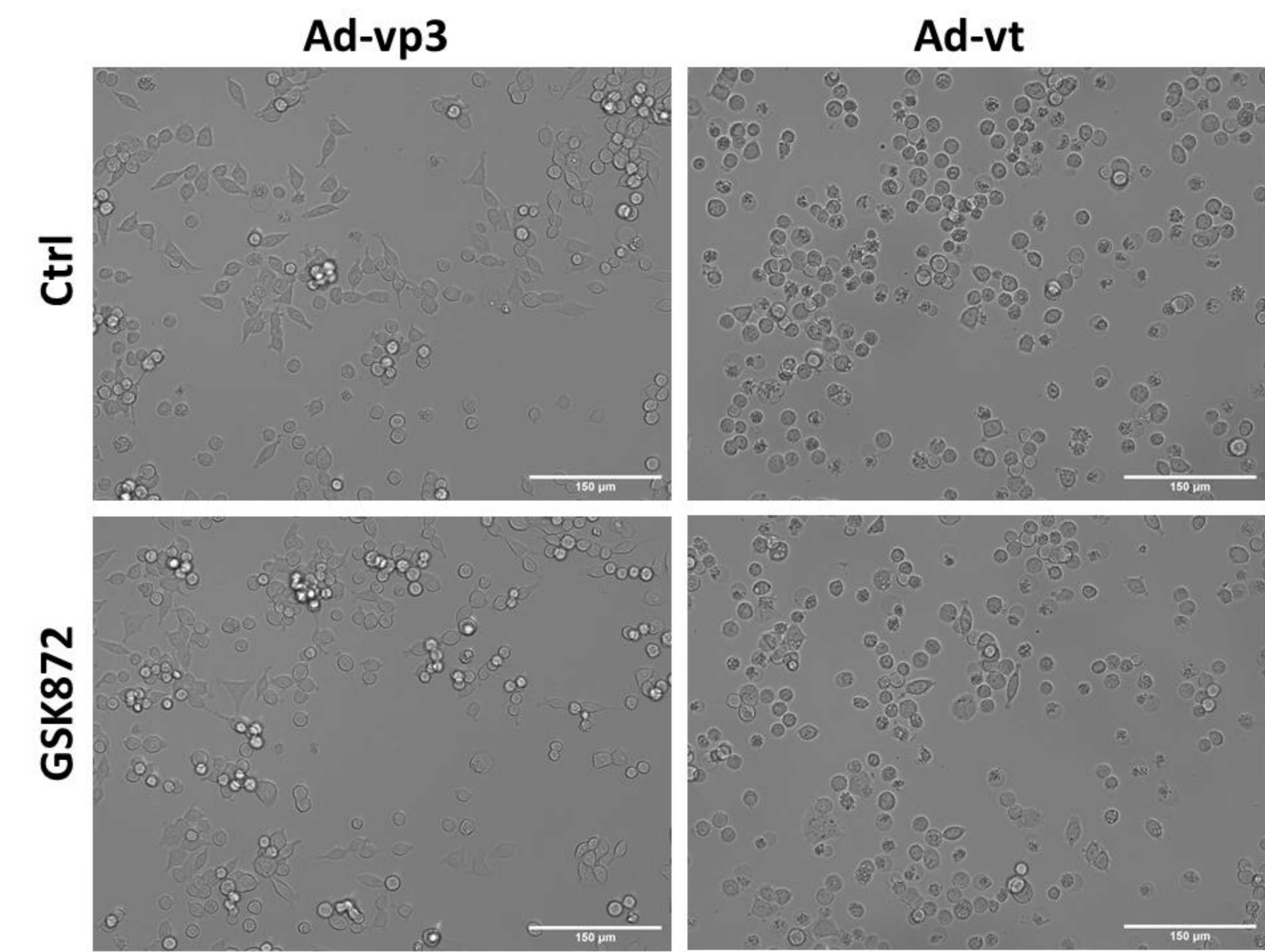
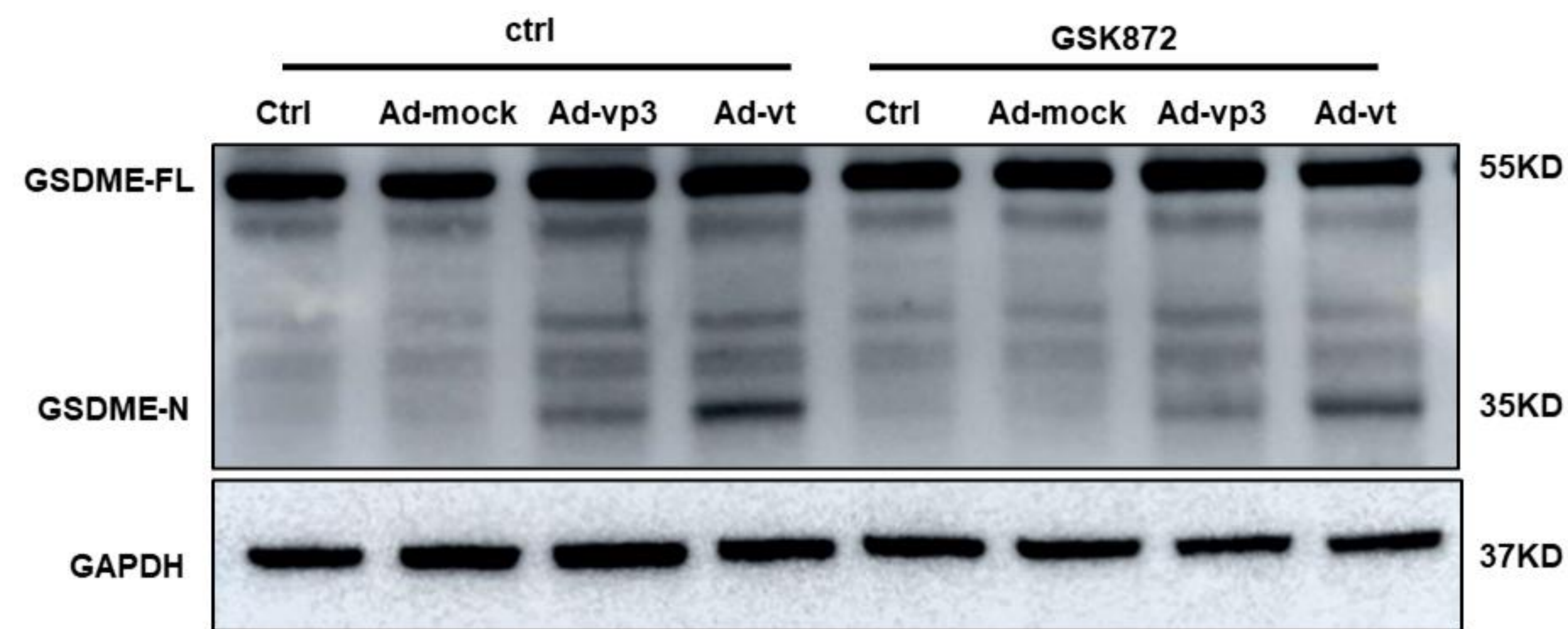
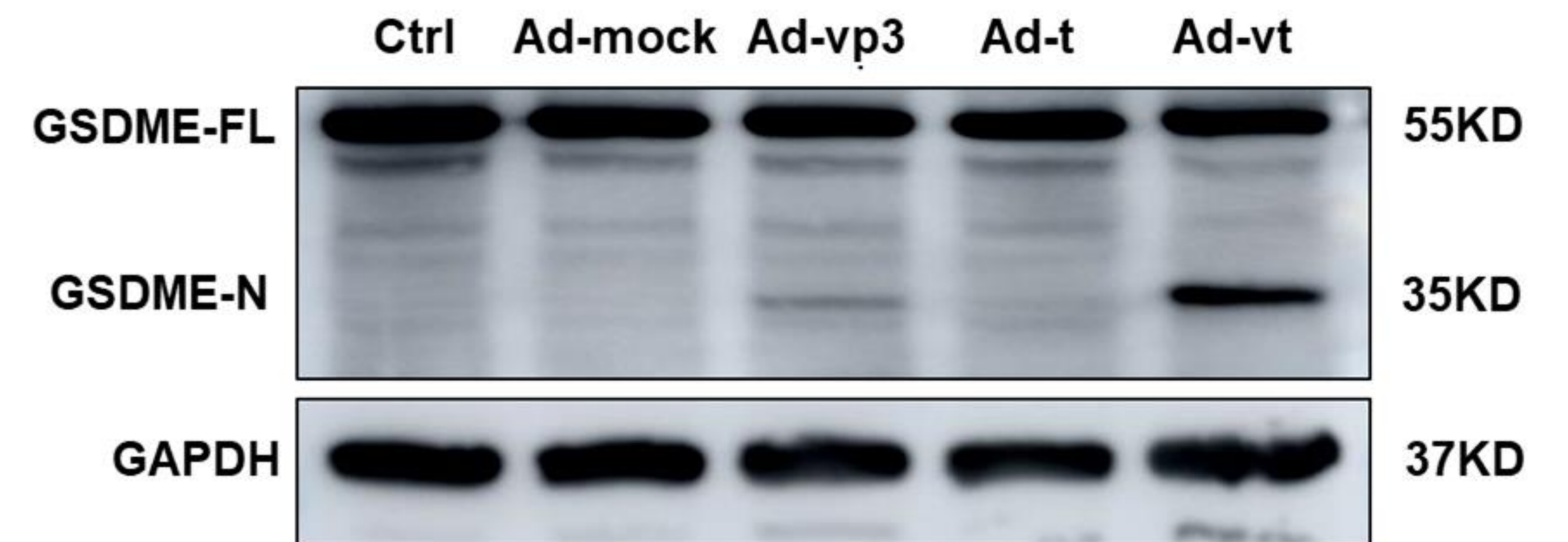
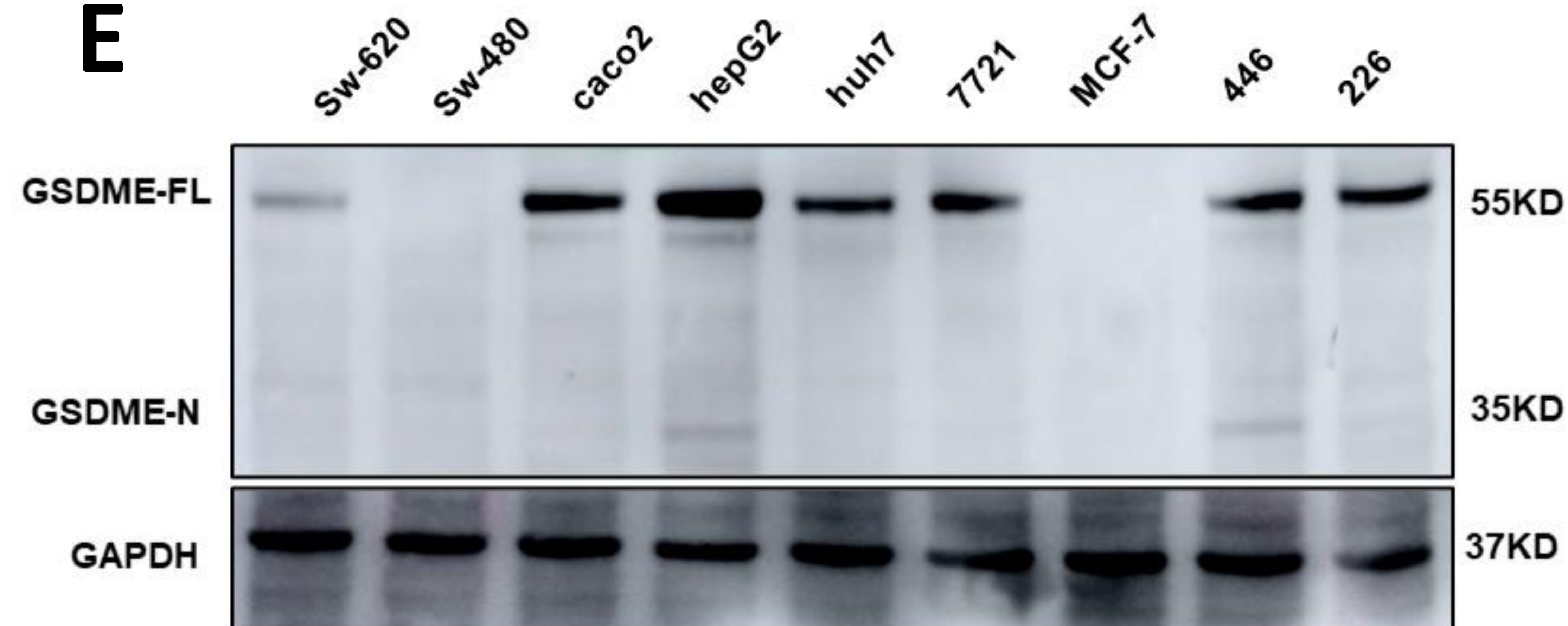
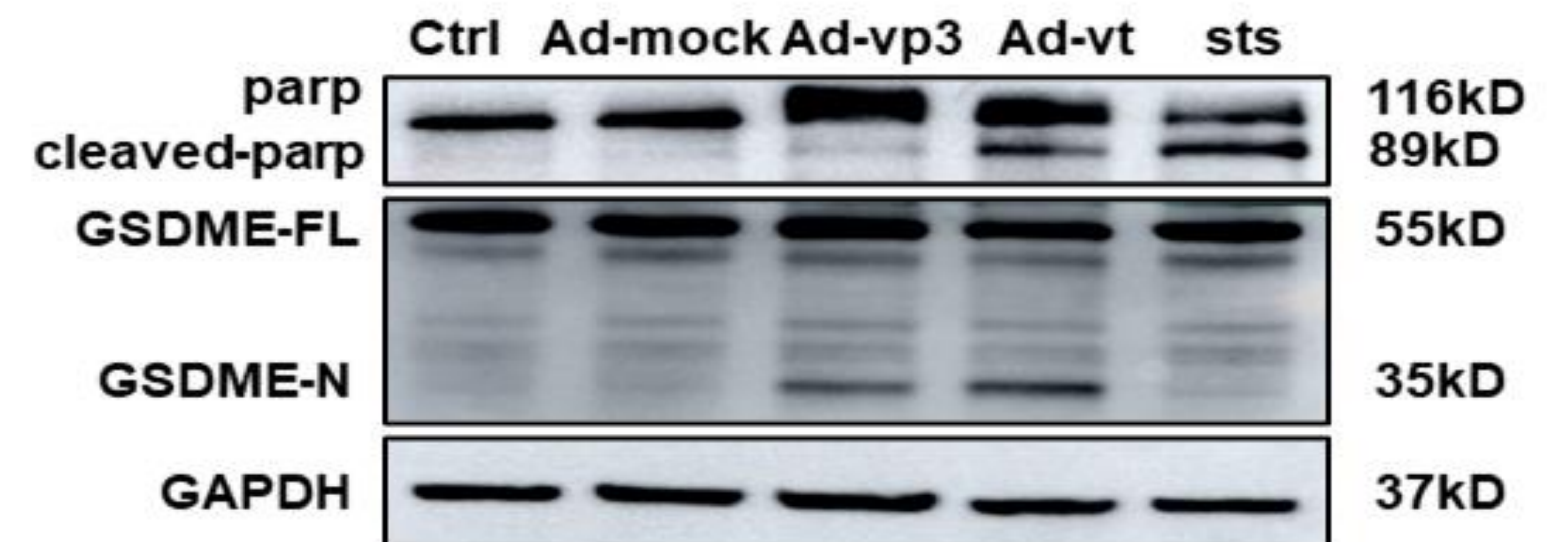


**A****B****C****D****E****F**



Supplementary Fig.1 (A) HCT116 cells were treated with 10 MOI of Ad-mock, Ad-vp3 and Ad-vt for 12, 24, 36, 48, 72 hours, and cell viability was determined by the CCK8 assay. (B) Image of pyroptotic cells with or without the necroptosis inhibitor GSK'872. (C) Cleavage of GSDME was detected by western blotting. (D) HCT116 cells were treated with Ad-mock, Ad-vp3, Ad-T and Ad-vt, followed by a detection GSDME cleavage. (E) Nine different types of cancer cells were treated with Ad-vp3, and GSDME cleavage was detected. (F) HCT116 cells were treated with STS, and GSDME cleavage was detected.