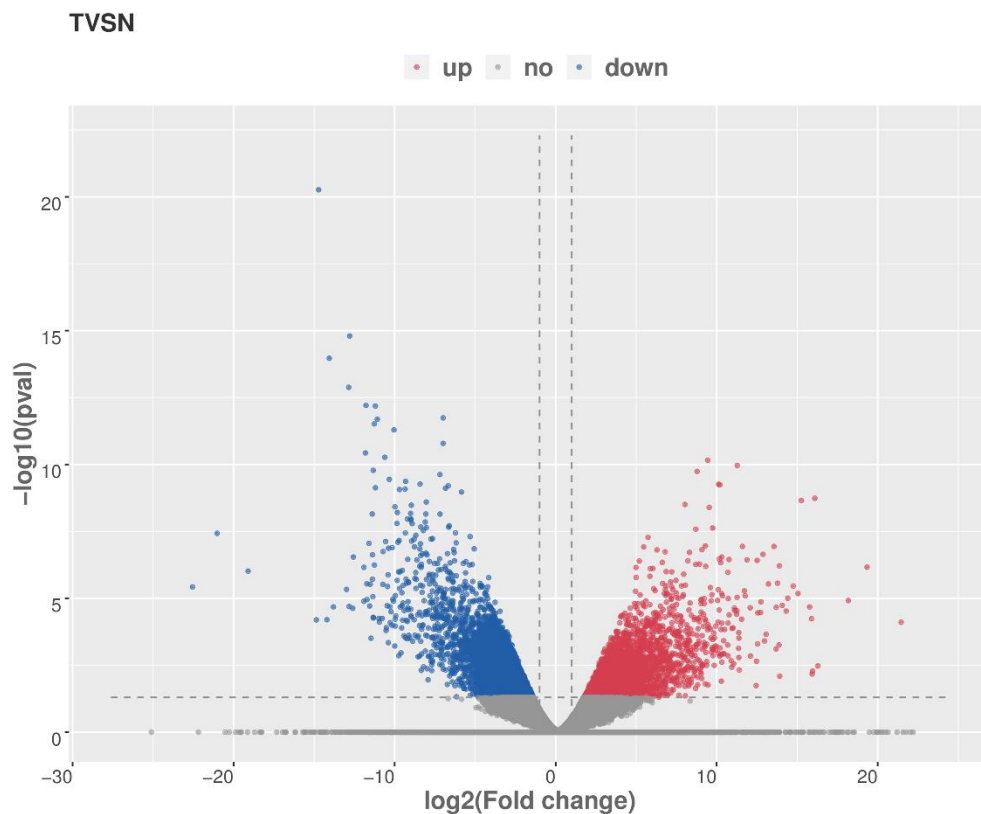
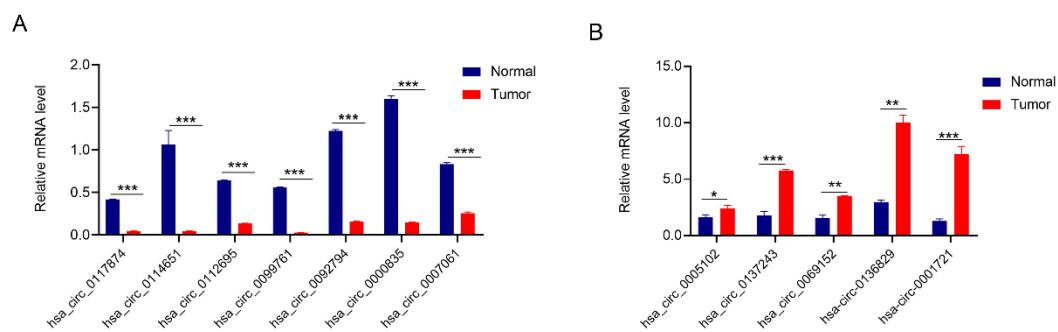


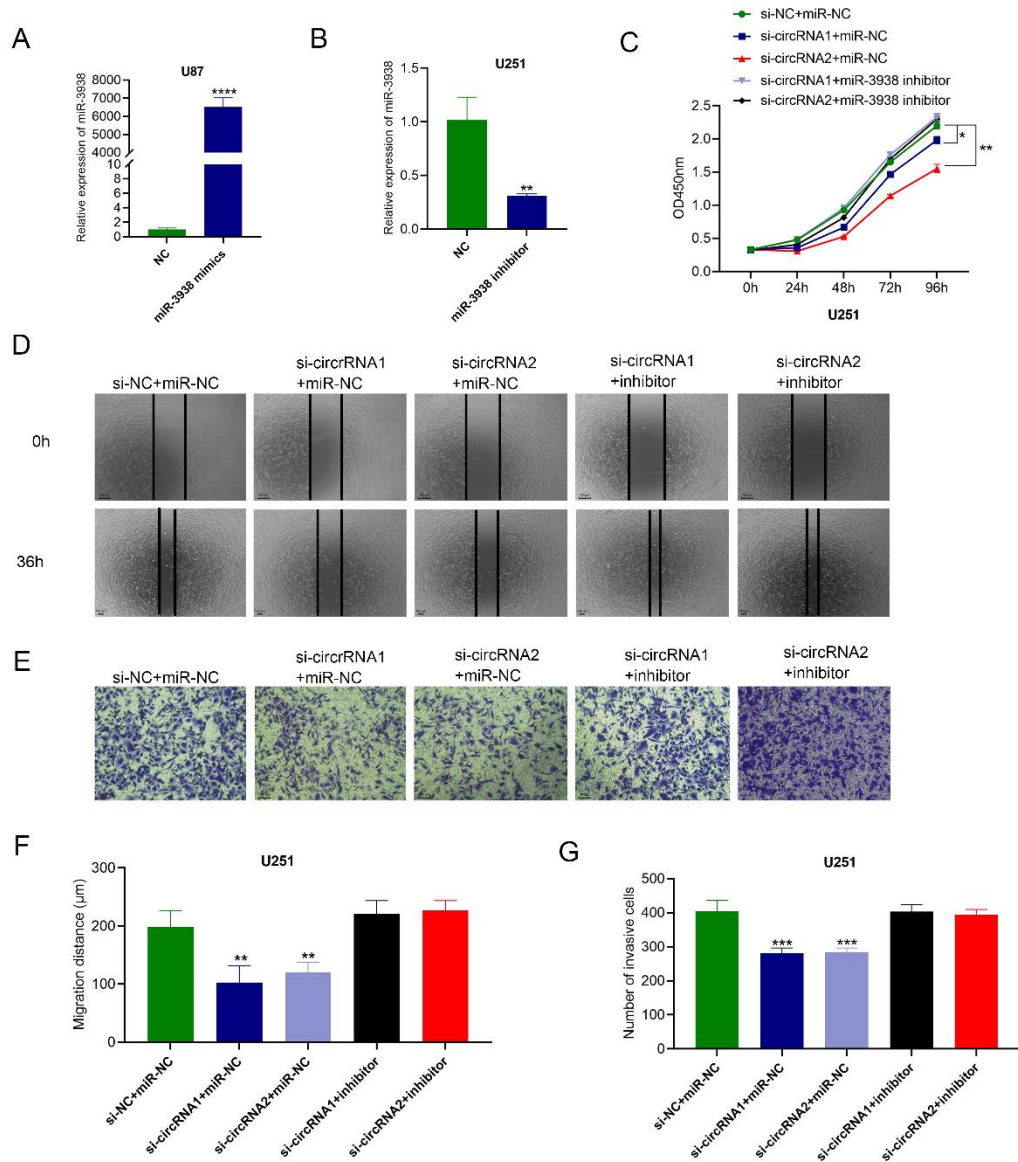
Supplementary Information



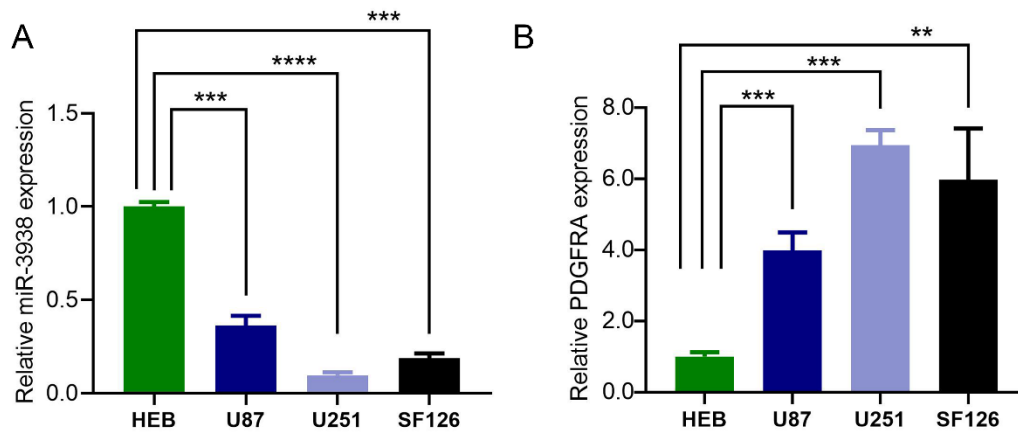
Supplementary Figure 1. Volcano plot describing the profile of circRNAs expression in glioma tissue and normal brain tissue.



Supplementary Figure 2. The results of RNA-Seq were confirmed by qPCR in 9 sequencing samples.



Supplementary Figure 3. The inhibition of miR-3938 expression could counteract the abilities of proliferation, migration and invasion in circCDK14 knockdown glioma cells.



Supplementary Figure 4. The level of miR-3938 and PDGFRA in glioma cells.

Table S1 Primer sequences

Genes	Primer	Sequence (5'-3')
circCDK14 (divergence)	Forward primer	CTCCTCCACTGGCAAAGAG
	Reverse primer	GTGTAGACATCTTTGTGACACATATCGAG
circCDK14 (convergence)	Forward primer	TGATCAAACCCTGGACACA
	Reverse primer	GCCAGTGGAGGAGGTCTTAA
GAPDH (convergence)	Forward primer	GTCTCCTCTGACTCAACAGCG
	Reverse primer	ACCACCCTGTTGCTGTAGCAA
GAPDH (divergence)	Forward primer	TGTTCTGTTTCGTGTGTGAGG
	Reverse primer	TGTGAGAAGCCTCTGTTCGT
CDK14	Forward primer	TGTCTTACATCCACCAGCGT
	Reverse primer	TGTGGCTAGGGACGGATTTT
has_circ_0117874	Forward primer	GAAGGACCATGCTCAGAAGC
	Reverse primer	ATTAACTCTTCCATTGCAGC
has_circ_0114651	Forward primer	TCACTGCAAAGACCACACAG
	Reverse primer	GGCGTTCAGTTTCATGCG
has_circ_0112695	Forward primer	GCCATTCAAAGTCTATCCG
	Reverse primer	GTAACAATCCTGACTTGGTAGCT
has_circ_0099761	Forward primer	AGATCTGGGACTTAGCAGGC
	Reverse primer	GCAAGCACAAAACCACAGTCTA
has_circ_0092794	Forward primer	TTTCTGGCCTATTAATAACAGATG
	Reverse primer	TTCGACTGTCTGGGTTTG
has_circ_0000835	Forward primer	ATCCAAGTGGCAATAGGCAT
	Reverse primer	GCACCTGCAAAGATTCCTC
has_circ_0007061	Forward primer	AATGGTGACAGATCCAGGCA
	Reverse primer	GATTCAGCAGCCTCCTG
has_circ_0005102	Forward primer	GGGGCAGGCAATAAATGGAGC
	Reverse primer	AGACTGGACGTCTACAGGC
has_circ_0137243	Forward primer	TTTGCGGAGGAAGACTATAACC
	Reverse primer	CTTGCCCTCCAGTTT
has_circ_0069152	Forward primer	GAAGGACCATGCTCAGAAGC
	Reverse primer	ATTAACTCTTCCATTGCAGC
has_circ_0136829	Forward primer	CAGAAGGCCAGTGGTAGAA
	Reverse primer	GCTTCTGAGTCAGGTTTCTATTAAAG
miR-3938	Stem-loop primer	GTCGTATCCAGTGCAGGGTCCGAGGTATTGCACTGGATACGACCCGGT
miR-3938	Forward primer	GCGGAATTCCTTGTAGATA
	Reverse primer	CTCGCTTCGGCAGCACA
U6	Forward primer	AACGCTTACGAATTTGCGT
	Reverse primer	CTCGCTTCGGCAGCACA
PDGFRA	Forward primer	ATGGATTAAGCCGGTCCCAA
	Reverse primer	TAAATGGGGCCTGACTTGGT

Table S2 Correlation between circCDK14, miR-3938 expression and clinicopathological features of patients.

Characteristics	Case	CircCDK14 expression		P value	miR-3938 expression		P value
		High	low		High	low	
All cases	76	37	39		38	38	
Age(years)				0.643			0.486
>50	34	17	15		14	18	
<=50	42	20	24		24	20	
Gender				0.359			0.358
Male	38	21	17		21	16	
Female	38	16	22		17	22	
Grade				0.027			0.002
I-II	30	9	23		22	8	
III-IV	46	28	16		16	30	