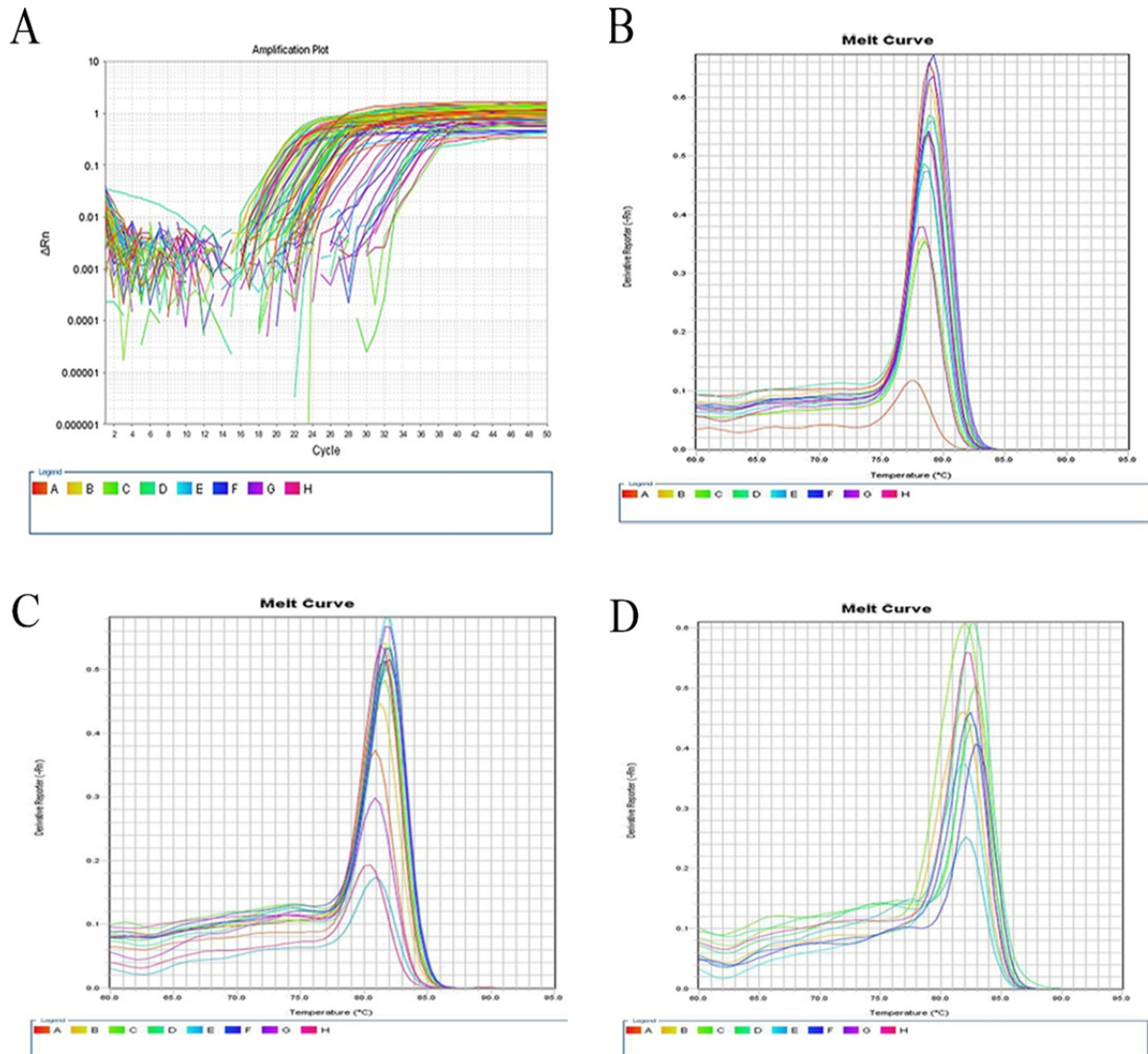


1 **Supplementary data:**

2 **Supplementary figure 1:** A- Amplification plot of target genes where RQ of gene expression of
3 RNA and lncRNA, was accomplished by the comparative $\Delta\Delta C_t$ method. B- Melting curve
4 analysis of NEAT1 to verify the specificity and lack of primer dimers C-Melting curve analysis
5 of TUG1. D-melting curve analysis of IL-6.

6
7



8
9

Supplementary figure 1