

Transfections	
	sequence
Si-circARID1A-1	TTGCCTCCATCCAGTCCAA
Si-circARID1A-2	GCCTCCATCCAGTCCAATG
Hsa-miR-370-3p mimic	GCCUGCUGGGGUGGAACCUUGU ACCAGGUUCCACCCCAGCAGGC
Hsa-miR-370-3p inhibitor	ACCAGGUUCCACCCCAGCAGGC
Primers	
circARID1A-F-con	CCCCTCATGCCCAACCTTCGT
circARID1A-R-con	TGCCCTCCCTTACTGGAGGTCATTG
circARID1A-F-div	AGATTCATTTGGGTCTCAGGC
circARID1A-R-div	ATTGGACTGGATGGAGGCA
ARID1A-F	GGACCTCTATCGCCTCTATGTG
ARID1A-R	GGACTTCTTGGGAATCAGCAG

## Dual-luciferase reporter plasmid of TGFBR 3'UTR

### Predicted binding sites:

	Predicted consequential pairing of target region (top) and miRNA (bottom)	Site type	Context++ score	Context++ score percentile	Weighted context++ score	Conserved branch length	P <sub>CT</sub>
Position 62-69 of TGFBR2 3' UTR hsa-miR-370-3p	5' ...ACCAAAGAACAGAGGCAGCAGGA...      3'  UGSUCCAAGGUGGGGUCGUCCG	8mer	-0.03	58	-0.03	4.245	N/A
Position 154-160 of TGFBR2 3' UTR hsa-miR-370-3p	5' ...AAGCAGAAACAACAGCAGCAGGG...      3'  UGGUCCAAGGUGGGGUCGUCCG	7mer-m8	-0.05	67	-0.05	3.365	N/A

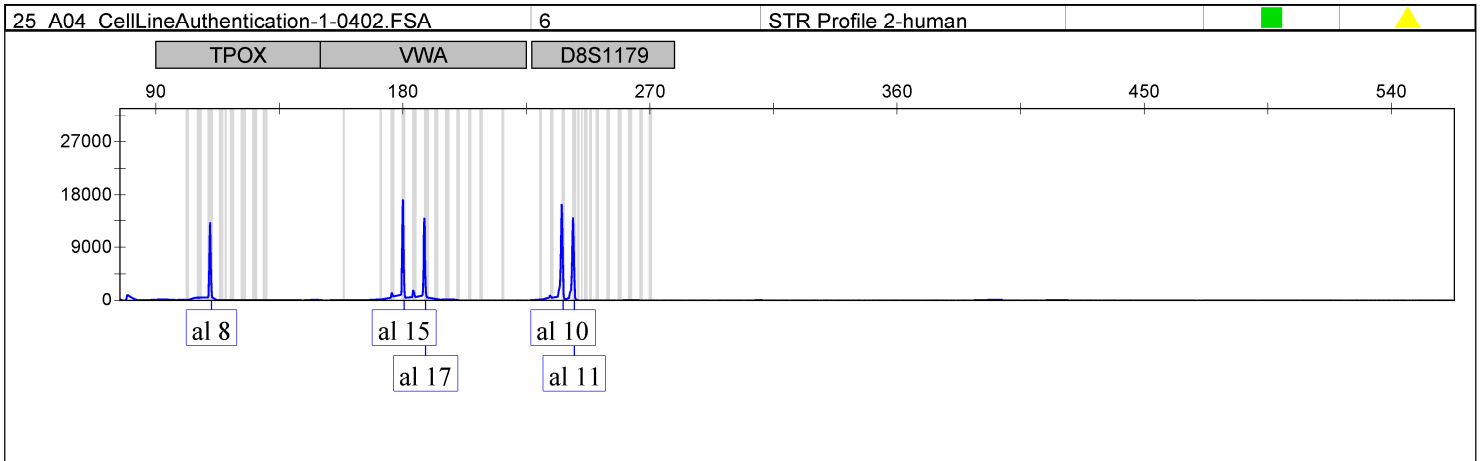
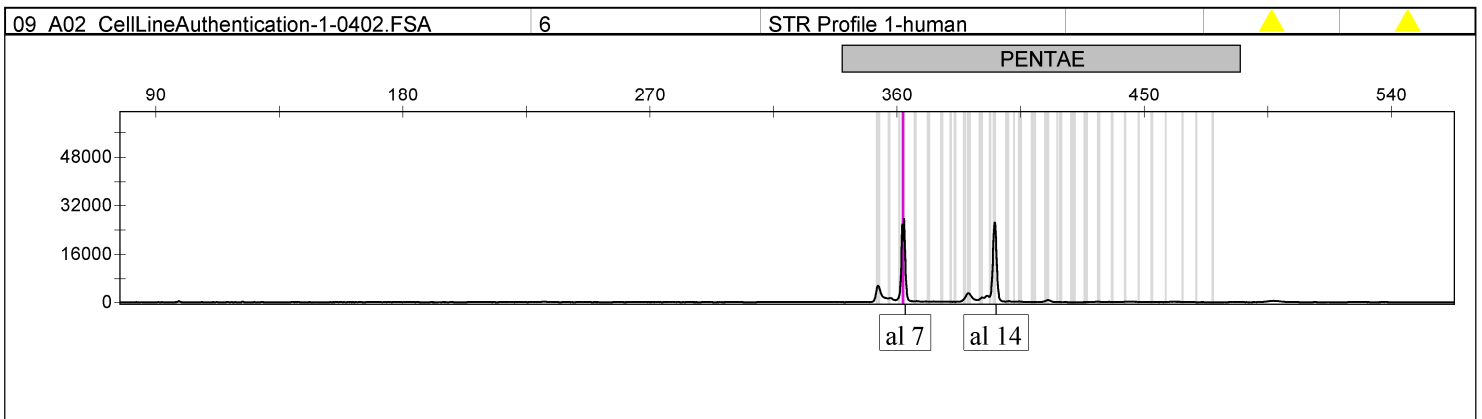
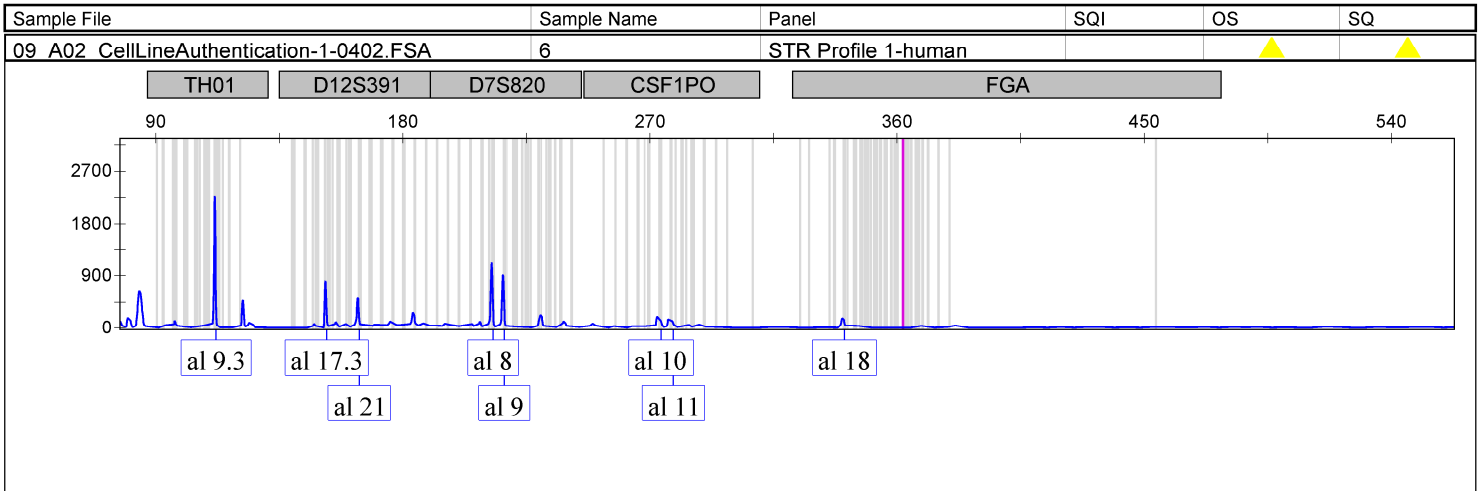
### WT:

CTCTTCTGGGGCAGGCTGGGCCATGTCCAAAGAGGCTGCCCCCTTCACCA  
AAGAACAGAGGCAGCAGGAAGCTGCCCTGAACTGATGCTTCCTGGAAA  
ACCAAGGGGGTCACTCCCCTCCCTGTAAGCTGTGGGGATAAGCAGAAACA

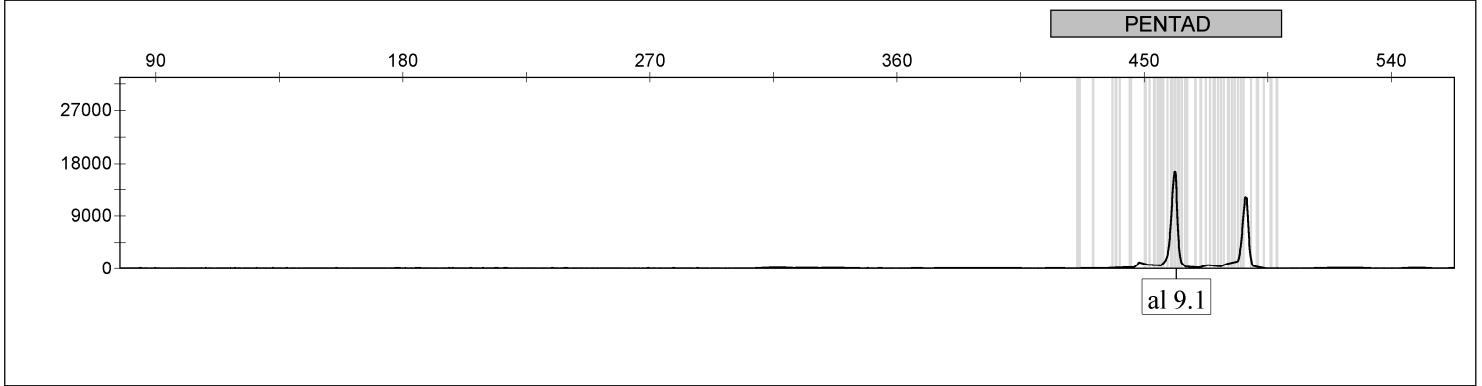
ACAGCAGCAGGAGAGTGGGTGACATAGAGCATTCTATGCCTTTGACATTGT  
CATAGGATAAGCTGTGTTAGCACTTCCTCAGGAAATGAGATTGATTTTAC  
AATAGCCAATAACATTTGCACTTTATTAATGCCTGTATATAAATATGAAT

Mut:

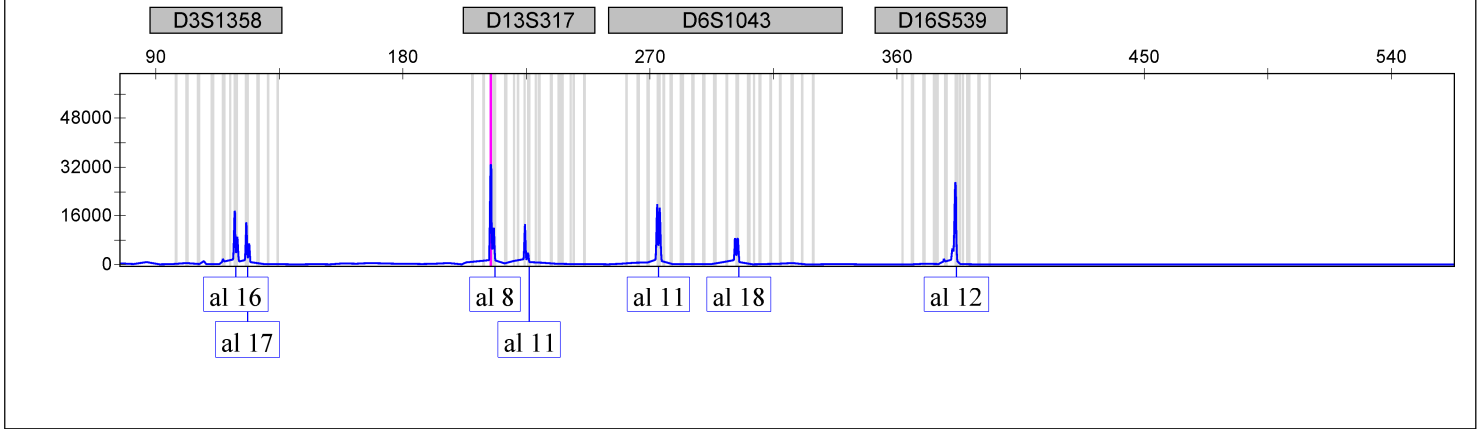
CTCTTCTGGGGCAGGCTGGGCCATGTCCAAAGAGGCTGCCCCTCTCACCA  
AAGAACAGAGGagatgcagAGCTGCCCCTGAACTGATGCTTCCTGGAAAACC  
AAGGGGGTCACTCCCCTCCCTGTAAGCTGTGGGGATAAGCAGAAACAACA  
GttcagtGAGTGGGTGACATAGAGCATTCTATGCCTTTGACATTGTCATAGGA  
TAAGCTGTGTTAGCACTTCCTCAGGAAATGAGATTGATTTTACAATAGCC  
AATAACATTTGCACTTTATTAATGCCTGTATATAAATATGAAT



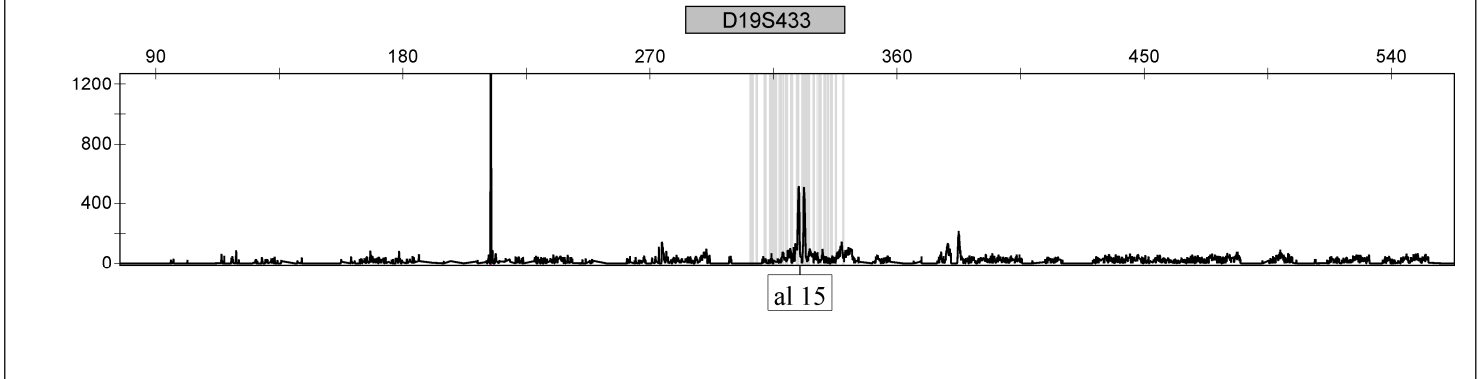
Sample File	Sample Name	Panel	SQI	OS	SQ
25 A04 CellLineAuthentication-1-0402.FSA	6	STR Profile 2-human		■	▲

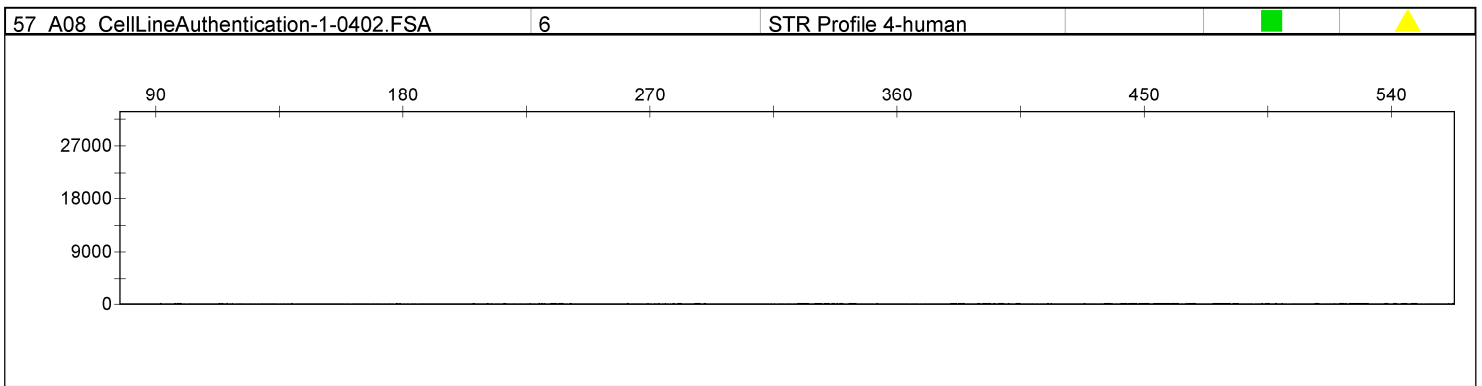
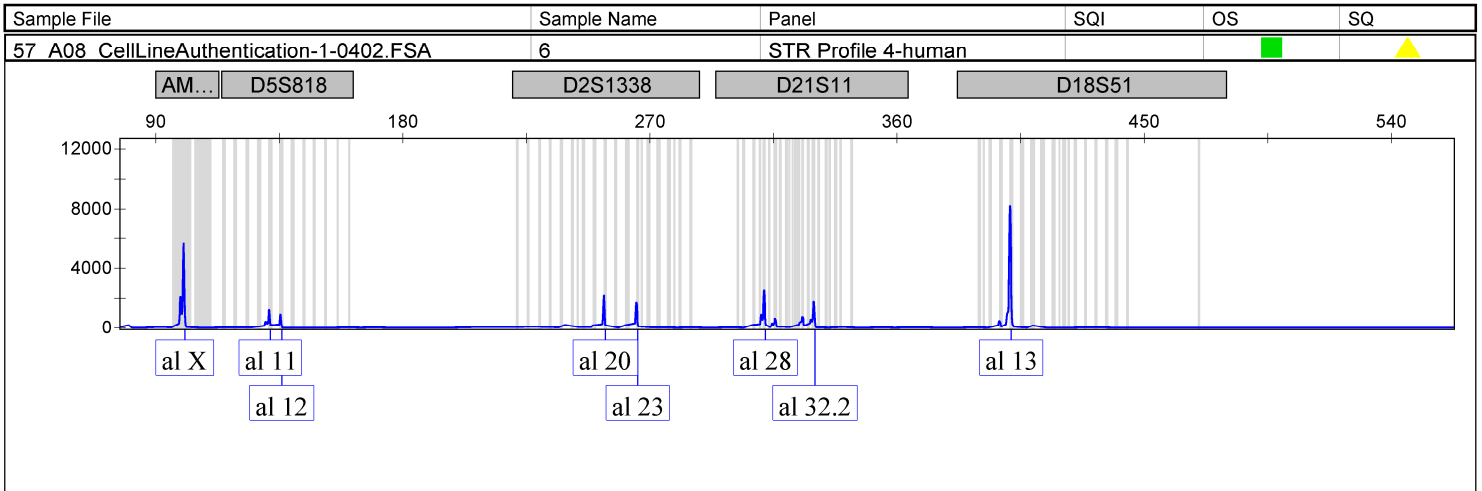


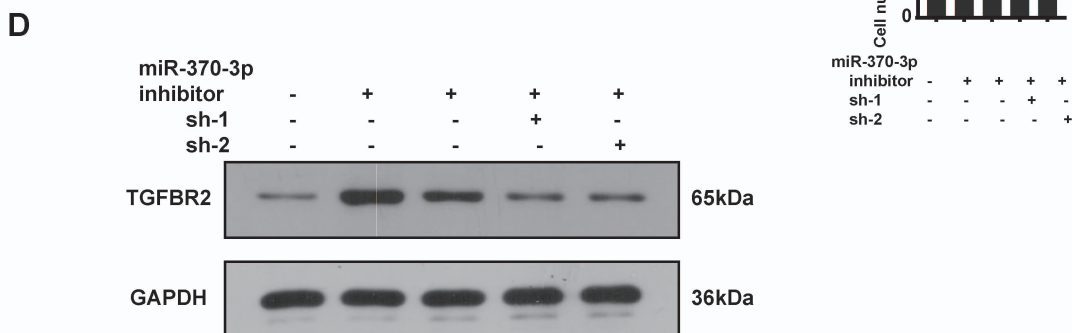
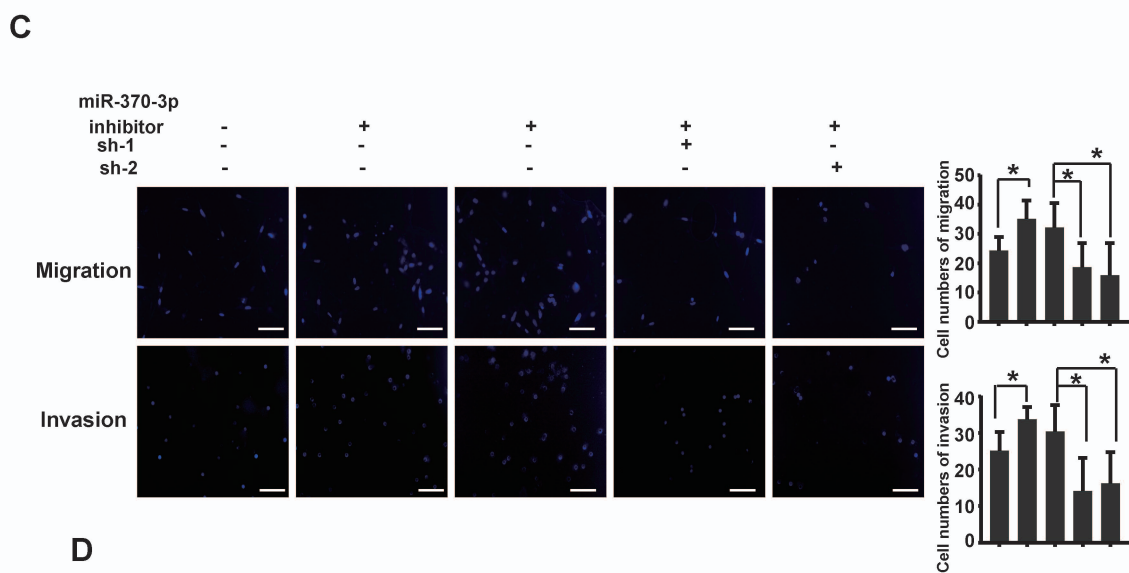
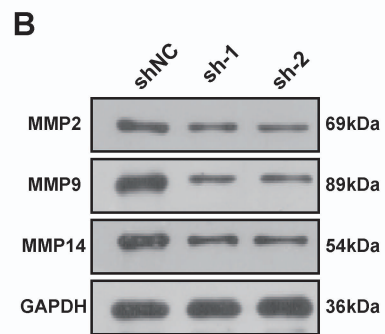
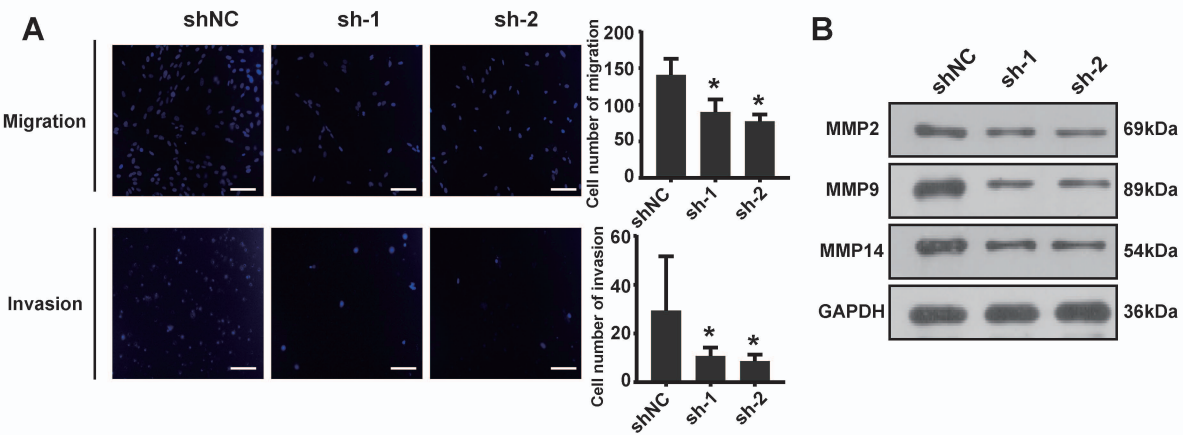
Sample File	Sample Name	Panel	SQI	OS	SQ
41 A06 CellLineAuthentication-1-0402.FSA	6	STR Profile 3-human		▲	▲



Sample File	Sample Name	Panel	SQI	OS	SQ
41 A06 CellLineAuthentication-1-0402.FSA	6	STR Profile 3-human		▲	▲







**Supplementary Figure 1. Decrease in circARID1A inhibited U118 cell migration and invasion via modulating miR-370-3p/TGFBR2 pathways.** **A.** Left: Images of Transwell assays of U118 cells, scale bar, 100 $\mu$ m; Right: Analyses of Transwell assay results indicated that decrease in circARID1A significantly inhibited U87 cell migration and invasion.  $n = 5, *p < 0.05$ , ANOVA. **B.** Images of western blotting showed that the expressions of MMPs decreased after silencing circARID1. **C.** Left: Images of Transwell assays of U118 cells; Right: Analyses of Transwell assays results indicated that transfections of miR-370-3p inhibitor promoted U118 cell migration and invasion, while silencing circARID1A suppressed the promotion. scale bar, 50 $\mu$ m  $n = 5, *p < 0.05$ , ANOVA. **D.** Images of western blotting showed that expression of TGFBR2 protein was decreased after silencing circARID1A.