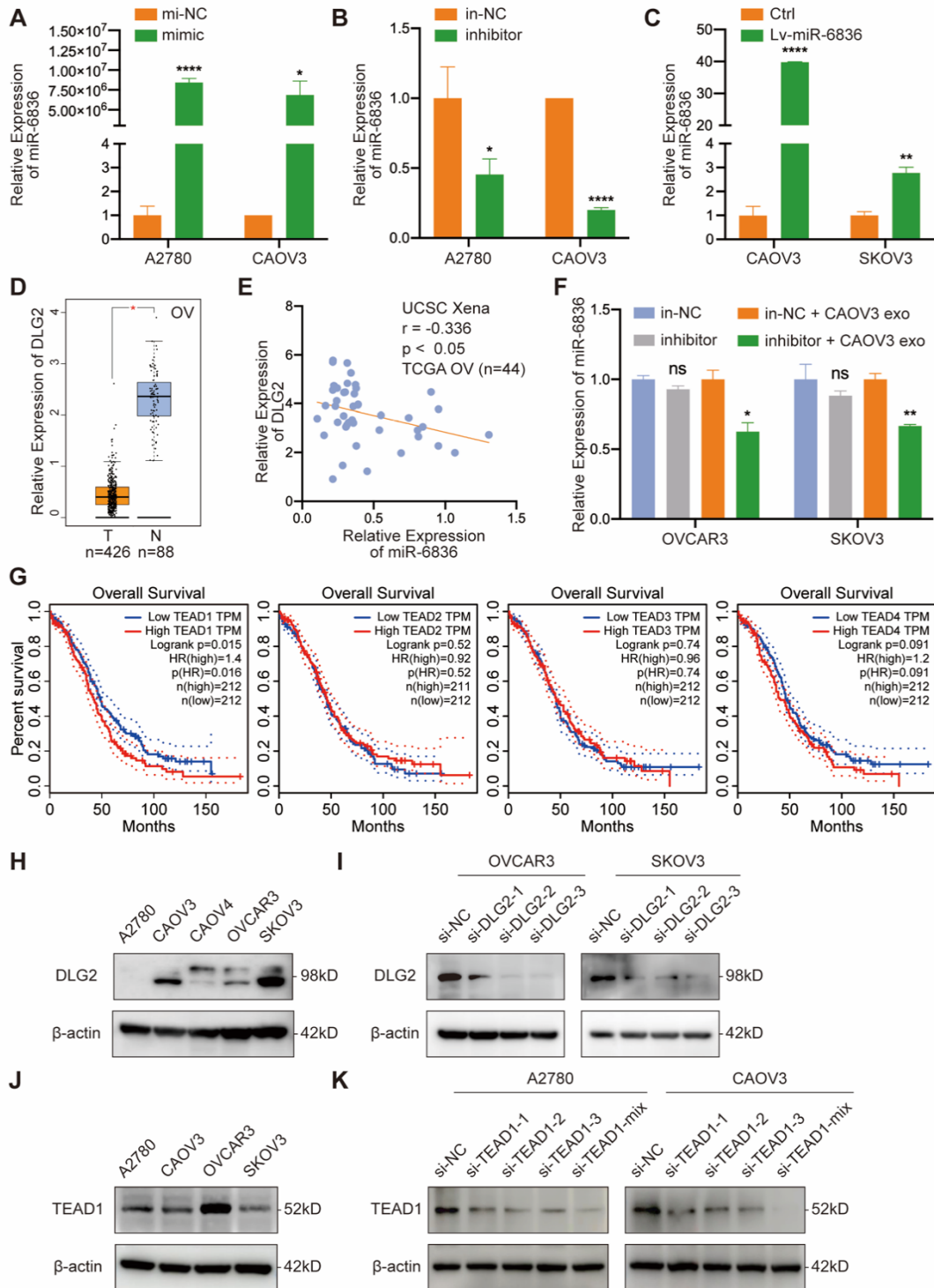


1 **Supplementary Figure 1**



- 2
- 3 **a** RT-qPCR analysis of miR-6836 expression in A2780/CAOV3 transfected with
- 4 mimic/mi-NC.
- 5 **b** RT-qPCR analysis of miR-6836 expression in A2780/CAOV3 transfected with

6 inhibitor/in-NC.

7 **c** RT-qPCR analysis of miR-6836 expression in CAOV3/SKOV3 infected with  
8 negative control lentivirus (Ctrl) or lenti-miR-6836 (Lv-miR-6836).

9 **d** Relative expression of DLG2 in OV datasets from match TCGA normal and  
10 GTEx data showing in box plot exported from GEPIA.

11 **e** Spearman correlation analysis between DLG2 mRNA and miR-6836  
12 expression levels in EOC tissues from TCGA (n=44) (UCSC Xena,  
13 <http://xena.ucsc.edu>).

14 **f** RT-qPCR analysis of miR-6836 expression in OVCAR3/SKOV3 treated with  
15 inhibitor/in-NC and CAOV3 exosomes.

16 **g** Kaplan–Meier survival curves analysis of OS in EOC patients with different  
17 TEAD family expression level exported from GEPIA.

18 **h** Western blot analysis of DLG2 expression in EOC cell lines.

19 **i** Western blot analysis of DLG2 expression in OVCAR3/SKOV3 treated with si-  
20 NC/si-DLG2.

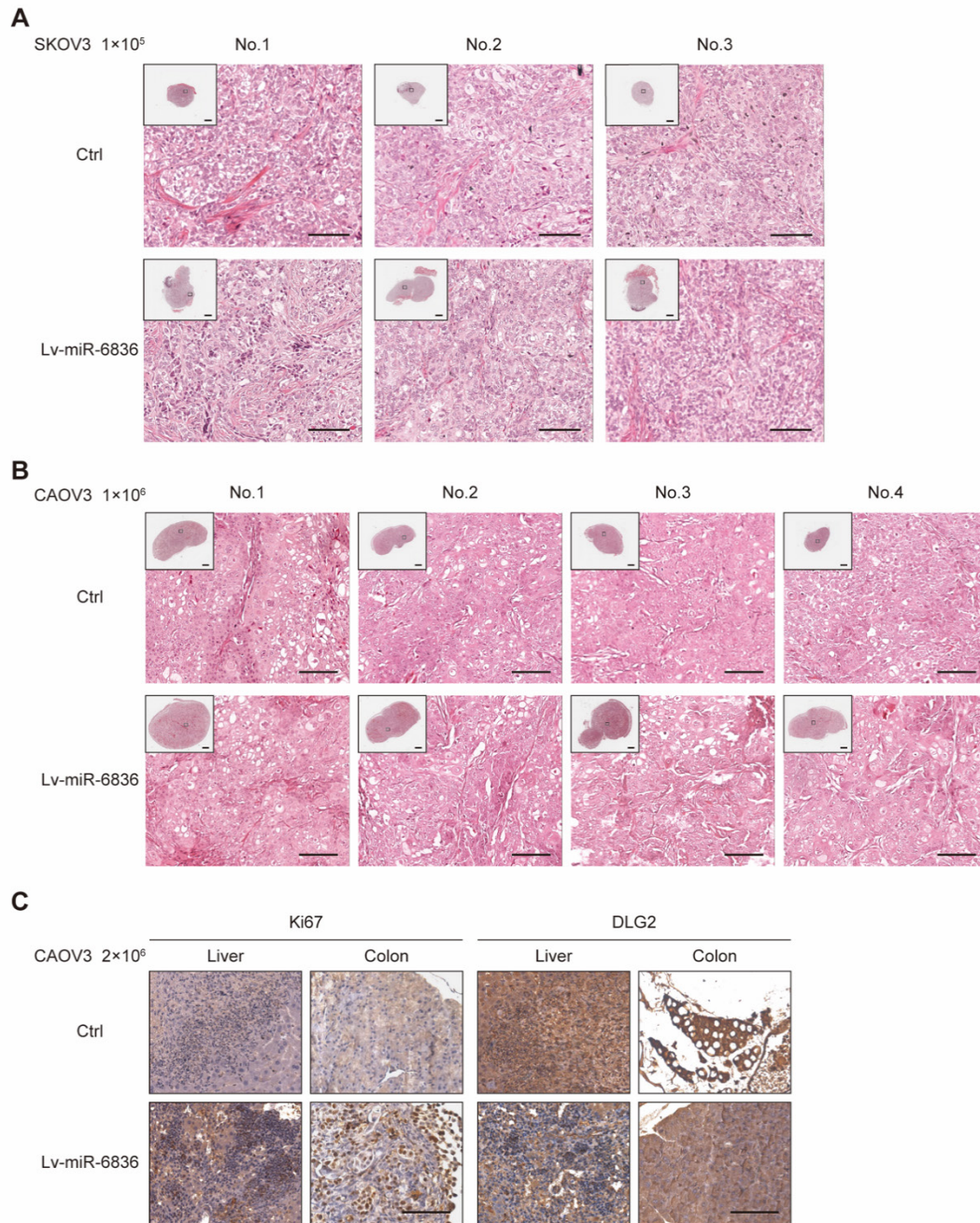
21 **j** Western blot analysis of TEAD1 expression in EOC cell lines.

22 **k** Western blot analysis of TEAD1 expression in OVCAR3/SKOV3 treated with  
23 si-NC/si-TEAD1.

24 Results are presented as mean  $\pm$  SEM; \*P<0.05, \*\*P<0.01, \*\*\*P<0.001.

25

26 **Supplementary Figure 2**



27

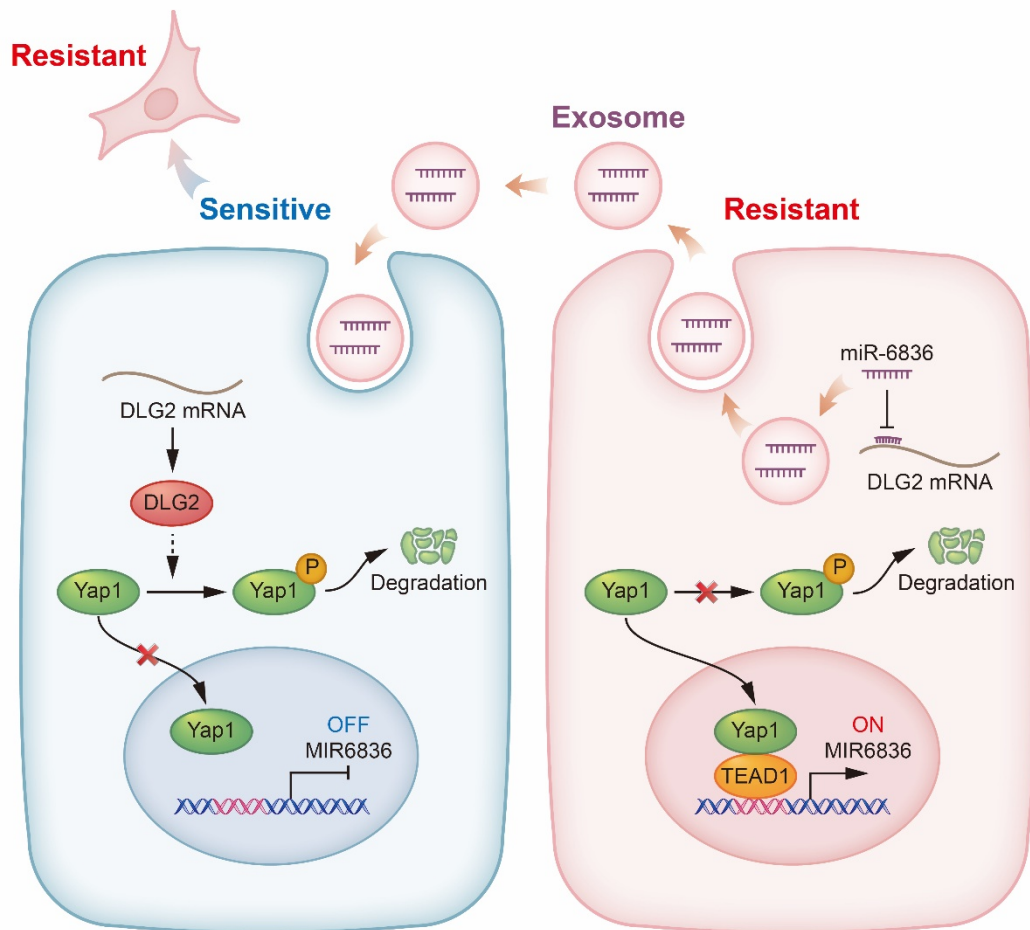
28 **a** For spheroid cells tumorigenicity assay, Hematoxylin-eosin (HE) staining of  
 29 tumor tissues is conducted and representative images of HE staining from Ctrl  
 30 and Lv-miR-6836 group are shown. Scale bar: upper 1mm; below 100  $\mu$ m.

31 **b** For subcutaneous tumor formation model, HE staining of tumor tissues is  
 32 conducted and representative images of HE staining from Ctrl and Lv-miR-6836  
 33 group are shown. Scale bar: upper 1mm; below 100  $\mu$ m.

34 c For peritoneal metastatic model, representative IHC staining of Ki67 and  
 35 DLG2 in liver and colon metastases. Scale bar, 100  $\mu$ m.

36

37 **Abstract Figure**



38

39 **Table S1 Primer sequence**

Name	Forward	Reverse
U6	CTCGCTTCGGCAGCACA	AACGCTTCACGAATTTGCGT
External Control	GCTTTGTGGCCATTGTGCAT	CATTTGCCCGTCCCAATGTC
DLG2	GCAGCTTATTCCAAGCTTTGCT	CACGGAGCAAGAAGGGATGT
GAPDH	TGTTGCCATCAATGACCCCTT	CTCCACGACGTACTCAGCG
Primer a	GAAGGGGTATCTTAGGGTCCC	AGGCAGAAGTGGATGGAACG
Primer b	CAGGAGAATGGCGTGAACCC	CTTCGAGCCCAGCAGTCTT
Primer c	GGGTCCTATGTGCGTCCG	GCAGCAGATCCAAGAAGAGGT

40

41