

**Supplementary Table1. Primers used in Real time PCR**

<b>Primer Name</b>	<b>Sequence (5'-3')</b>
hsa_circ_0008705 F	CATCAACCAGTTTGCAGCAG
hsa_circ_0008705 R	GAGGCCATAGGGTACGACAA
hsa_circ_0025583 F	TTGGGGCTCTGATTGATACA
hsa_circ_0025583 R	TCCAGACACAAGGAAACCAA
hsa_circ_0034693 F	TGAAGCTCATTTTAAGGAAATGG
hsa_circ_0034693 R	TTTTCCAGGTTTGGATGACTC
hsa-miR-1225-3p	TGAGCCCCTGTGCCGCCCCCAG
hsa-miR-1295	TTAGGCCGCAGATCTGGGTGA
hsa-miR-139-5p	TCTACAGTGCACGTGTCTCCAGT
hsa-miR-182	TTTGGCAATGGTAGAACTCACACT
hsa-miR-31	AGGCAAGATGCTGGCATAGCT
hsa-miR-485-3p	GTCATACACGGCTCTCCTCTCT
hsa-miR-516b	ATCTGGAGGTAAGAAGCACTTT
hsa-miR-556-3p	ATATTACCATTAGCTCATCTTT
hsa-miR-570	CGAAAACAGCAATTACCTTTGC
hsa-miR-635	ACTTGGGCACTGAAACAATGTCC
hsa-miR-671-5p	AGGAAGCCCTGGAGGGGCTGGAG
hsa-miR-767-3p	GGCATACCCCATGGTTTCT
hsa-miR-875-5p	TATACCTCAGTTTTATCAGGTG
COL11A1 F	ACCCTCGCATTGACCTTCC
COL11A1 R	TTTGTGCAAAATCCCGTTGTTT
MAD2L1 F	GTTCTTCTCATTTCGGCATCAACA
MAD2L1 R	GAGTCCGATTTTCTGCACTCG
TOP2A F	ACCATTGCAGCCTGTAAATGA
TOP2A R	GGGCGGAGCAAAATATGTTCC
TPD52 F	AGCATCTAGCAGAGATCAAGCG
TPD52 R	AGCCAACAGACGAAAAAGCAG

1 **Supplementary Figure legend**

2 **Figure 1 A.** Chamber-transwell invasion assay was performed to assess the invasion capacity of  
3 A549 cells after overexpression of AR and circ-SLCO1B7 (oecirc-SLCO1B7). **B.** MTT assay was  
4 performed to measure the DDP response of A549 cells after overexpression of AR and circ-  
5 SLCO1B7 (oecirc-SLCO1B7). **C-D.** Conserved AR binding motif and three predicted AREs by  
6 JASPAR within the 2 kb 5'-promoter region of SLCO1B7. Significance levels are denoted as \*p <  
7 0.05, \*\*p < 0.01, and \*\*\*p < 0.001.

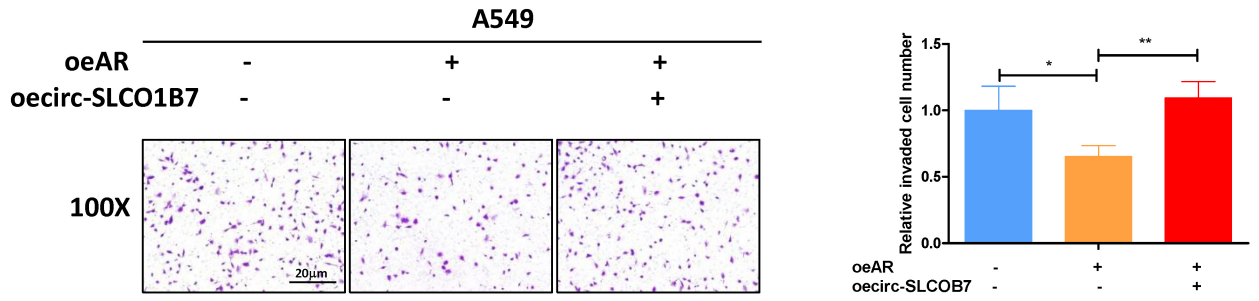
8 **Figure 2 A.** Chamber-transwell invasion assay was performed to assess the invasion capacity of  
9 H1299 cells transfected with shAR or oemiR-139-5p. **B.** MTT assays were conducted to detect  
10 the DDP response of H1299 cells transfected with shAR or oemiR-139-5p. **C.** Luciferase reporter  
11 assay was performed to confirm the direct binding between miR-139-5p and circ-SLCO1B7. **D.**  
12 The expression levels of circ-SLCO1B7, miR-139-5p, TPD52 in A549 cells treated with 1 nM and  
13 10 nM DHT. **E.** The expression levels of circ-SLCO1B7, miR-139-5p, TPD52 in H1229 cells  
14 treated with 10  $\mu$ M and 20  $\mu$ M enzalutamide. **F.** TPD52 stability with or without miR-139-5p. 5  $\mu$ M  
15 Actinomycin D was used in this assay. \*p < 0.05, \*\*p < 0.01, and \*\*\*p < 0.001.

16 **Figure 3 A.** Survival curve of TPD52 expression in lung cancer patients from the TCGA database.  
17 **B.** AR expression in TPD52-high and TPD52-low lung cancer samples. **C.** MiR-139-5p expression  
18 in TPD52-high and TPD52-low lung cancer samples. **D.** The expression of miR-139-5p in different  
19 metastatic stage of lung cancer. Significance levels are denoted as \*p < 0.05, \*\*p < 0.01, and \*\*\*p  
20 < 0.001.

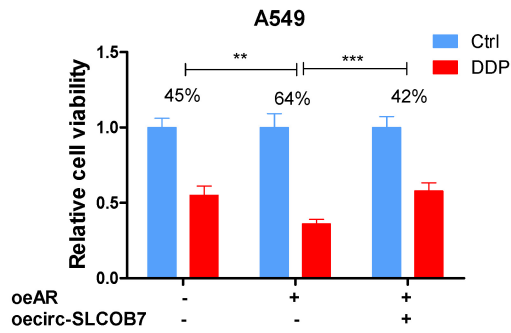
21

# Supplementary Fig. 1

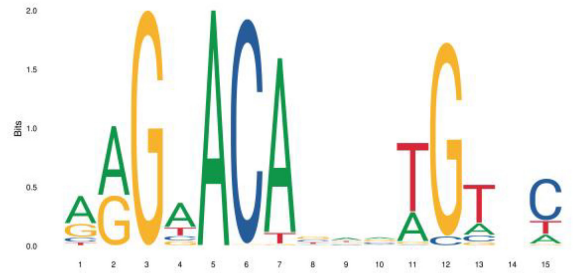
**A**



**B**



**C**

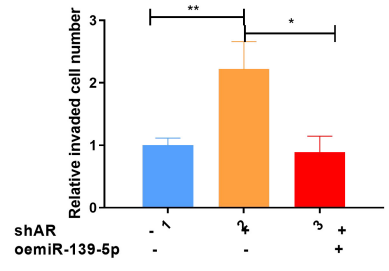
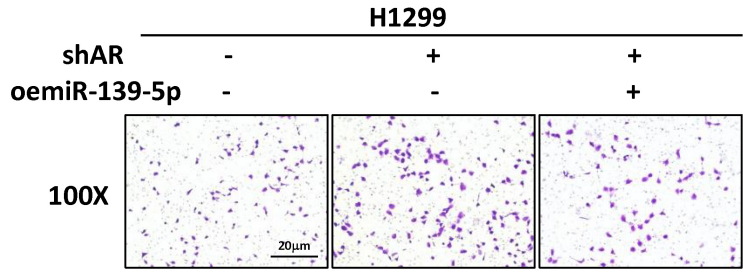


**D**

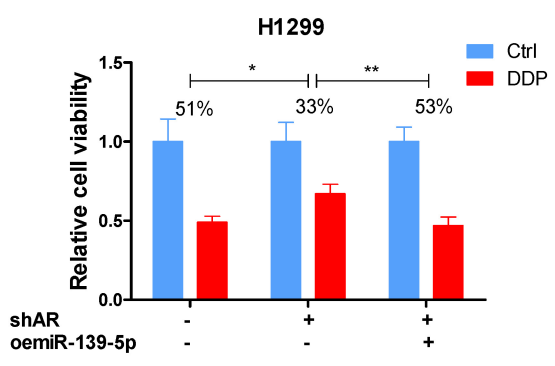
Score	Start	End	Strand	Predicted sequence
13.047663	1472	1486	-	AAGCACACAAAGTGT
11.211198	1468	1482	+	GAGCACACTTTGTGT
9.930478	1043	1057	-	CAGGACATGCAGTTT

# Supplementary Fig. 2

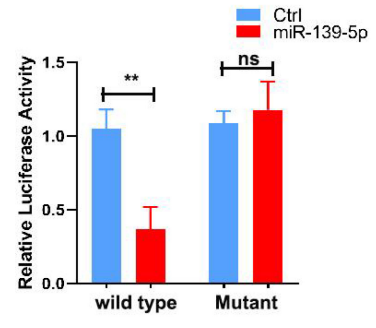
**A**



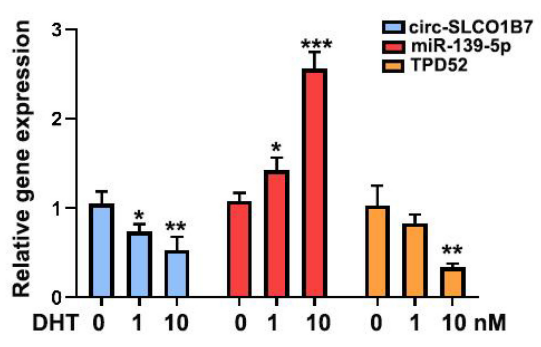
**B**



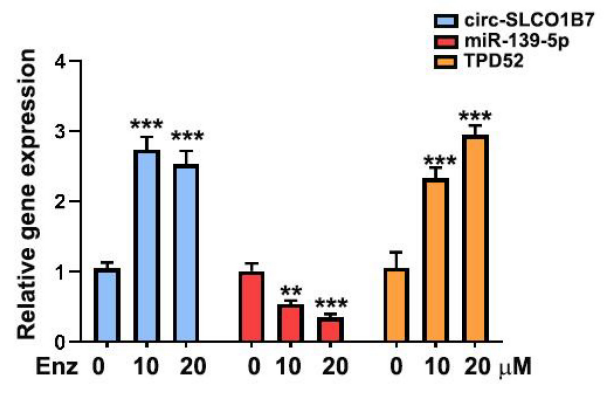
**C**



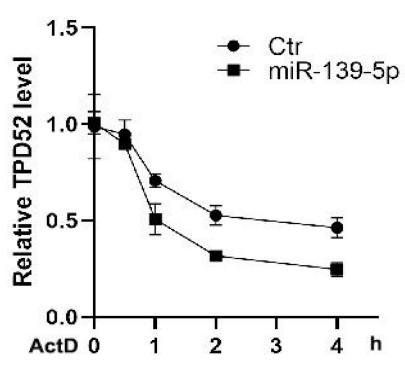
**D**



**E**

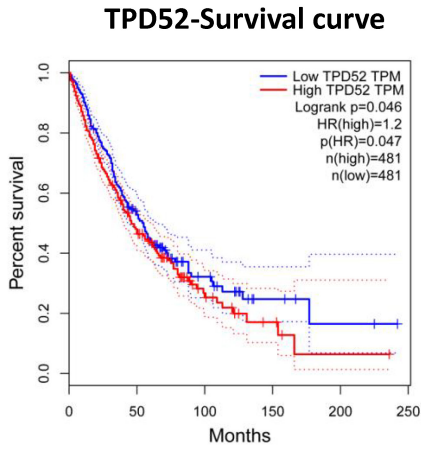


**F**

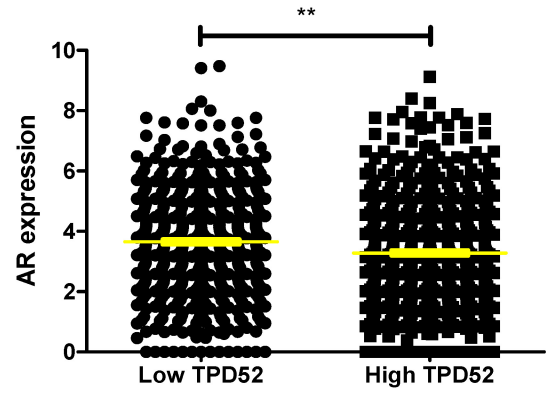


# Supplementary Fig. 3

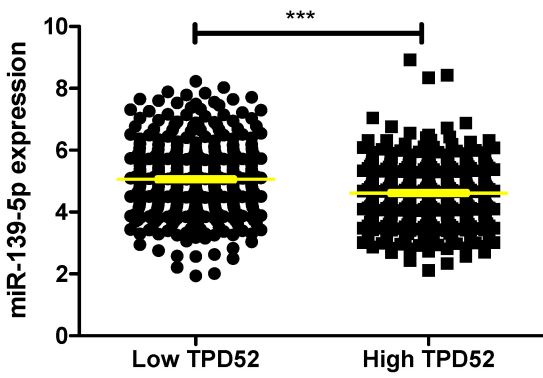
A



B



C



D

