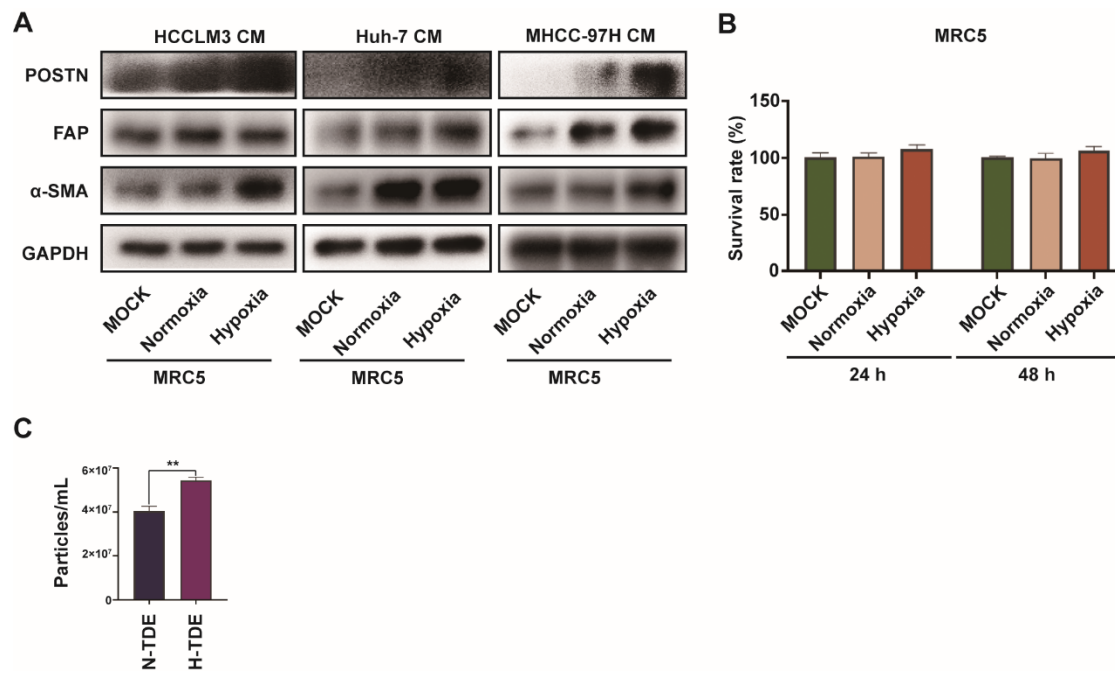


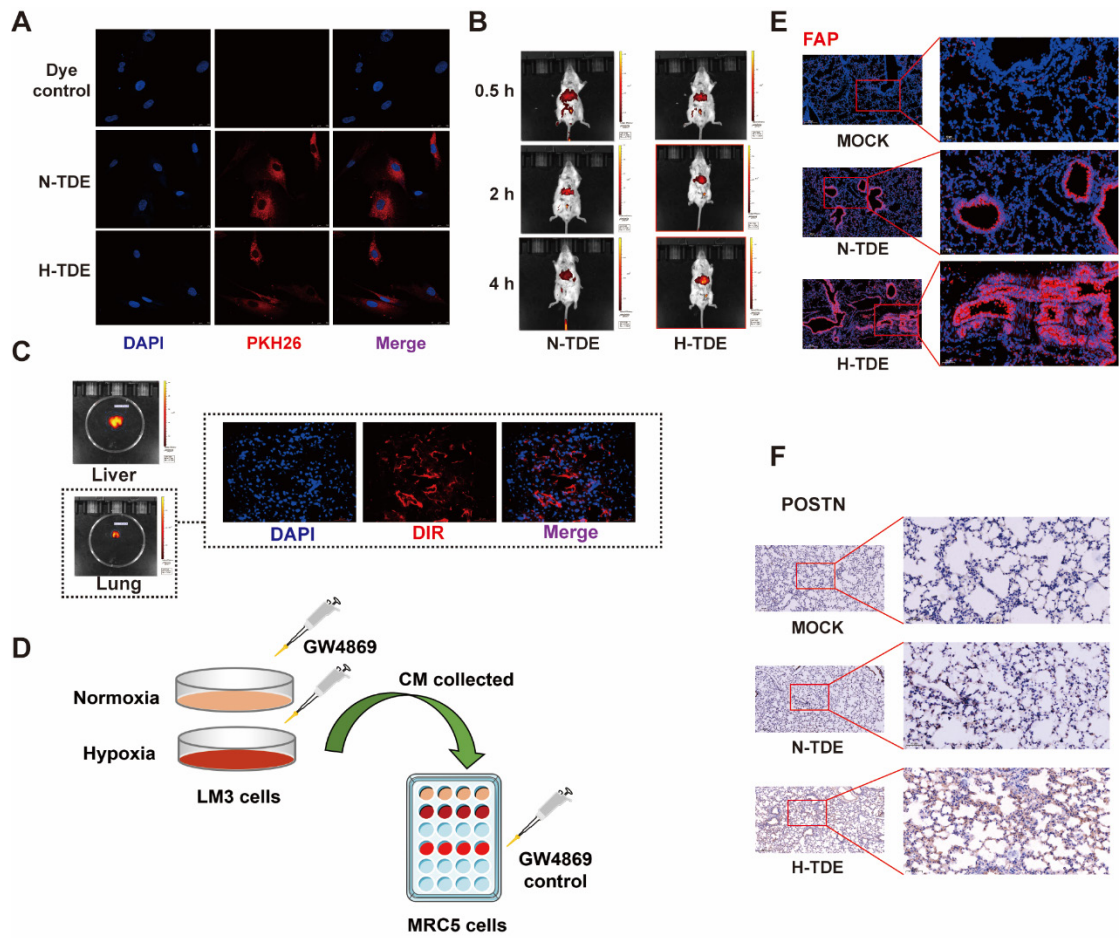
1 Supplementary figures



2

3 Figure S1.

4 A: Fibroblast activation markers expression in MRC5 treated by tumor cell-derived
5 conditioned medium. B: The survival rate of MRC5 treated by tumor cell-derived
6 conditioned medium determined by CCK-8. C: the quantity of TDE secreted by equal
7 quantity of LM3 cells were detected by nanoparticle tracking analysis.



8

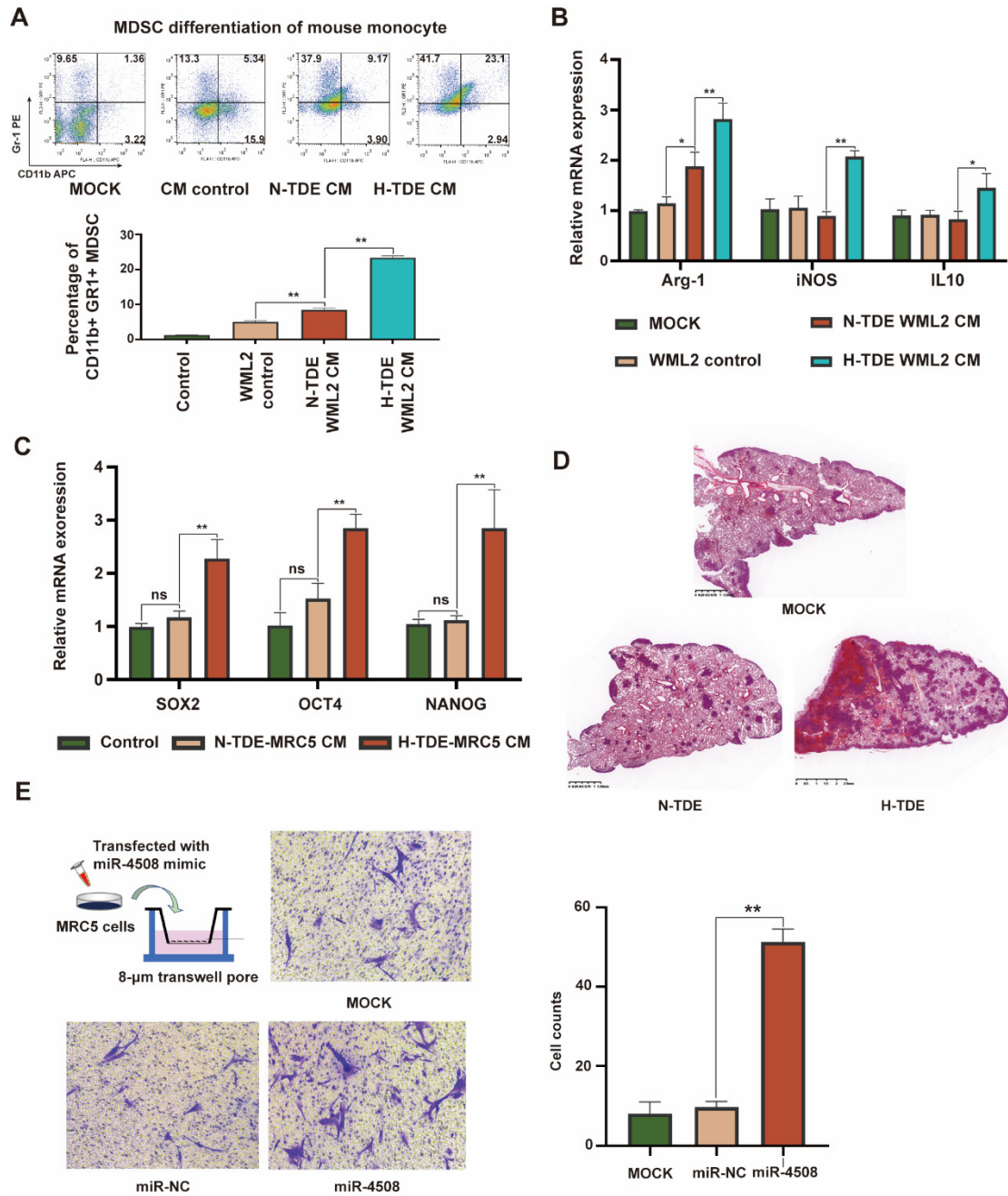
9 **Figure S2.**

10 A: PKH26-labelled tumor-derived exosomes were co-incubated with MRC5 cells.
 11 The fluorescent photograph showed the exosomes intake ability of MRC5 cells. B.
 12 The in vivo distribution of DIR-labelled tumor-derived exosomes at specific time
 13 points after injection determined by living imaging system. C: Images taken from the
 14 frozen section under fluorescence microscope. D: Schematic diagram of GW4869-
 15 mediated exosome blocking test. E: Immunofluorescence staining of FAP in the lungs
 16 of mice treated with TDE. F: Immunohistochemical staining of POSTN in the lungs
 17 of mice treated with TDE.

18

19

20



21

22 **Figure S3.**

23 A: MDSC differentiation of mice monocytes cultured in TDE-treated WML2

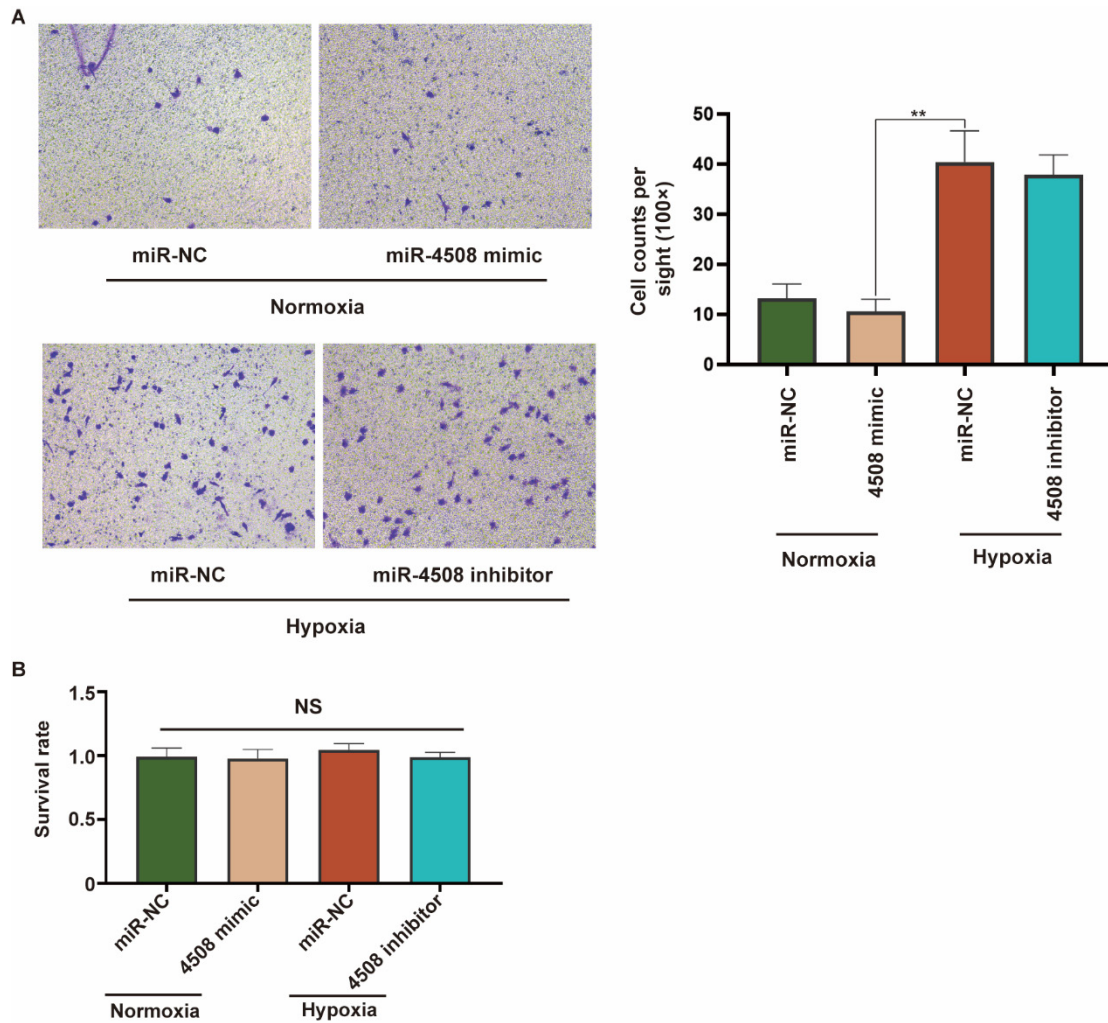
24 conditioned medium was detected by flow cytometry. B: The level of

25 immunosuppressive factors expressed in mice monocytes which were cultured in

26 TDE-treated WML2 conditioned medium was determined by qRT-PCR. C: The tumor

27 stemness markers including SOX2, OCT4 and NANOG expressed in LM3 tumor cells

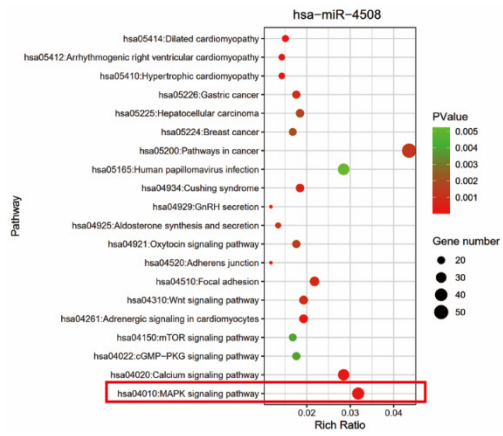
28 treated with conditioned medium from educated MRC5 cells. D: Representative
 29 panoramic paragraph of H&E-stained slides from pulmonary tissue of mice treated
 30 with TDEs and injected i.v. with H22 tumor cells. E: The effect of miR-4508 on the
 31 migration ability of MRC5 cells determined by transwell assay. **P<0.01.



32

33 **Fig. S4.**

34 A: The effect of miR-4508 and hypoxia environment on the migration ability of LM3
 35 tumor cells determined by transwell assay. B: The effect of miR-4508 and hypoxia
 36 environment on the proliferation ability of LM3 tumor cells determined by CCK8
 37 assay. **P<0.01.



38

39 **Figure S5.**

40 Pathway analysis of downstream signals of miR-4508.

41